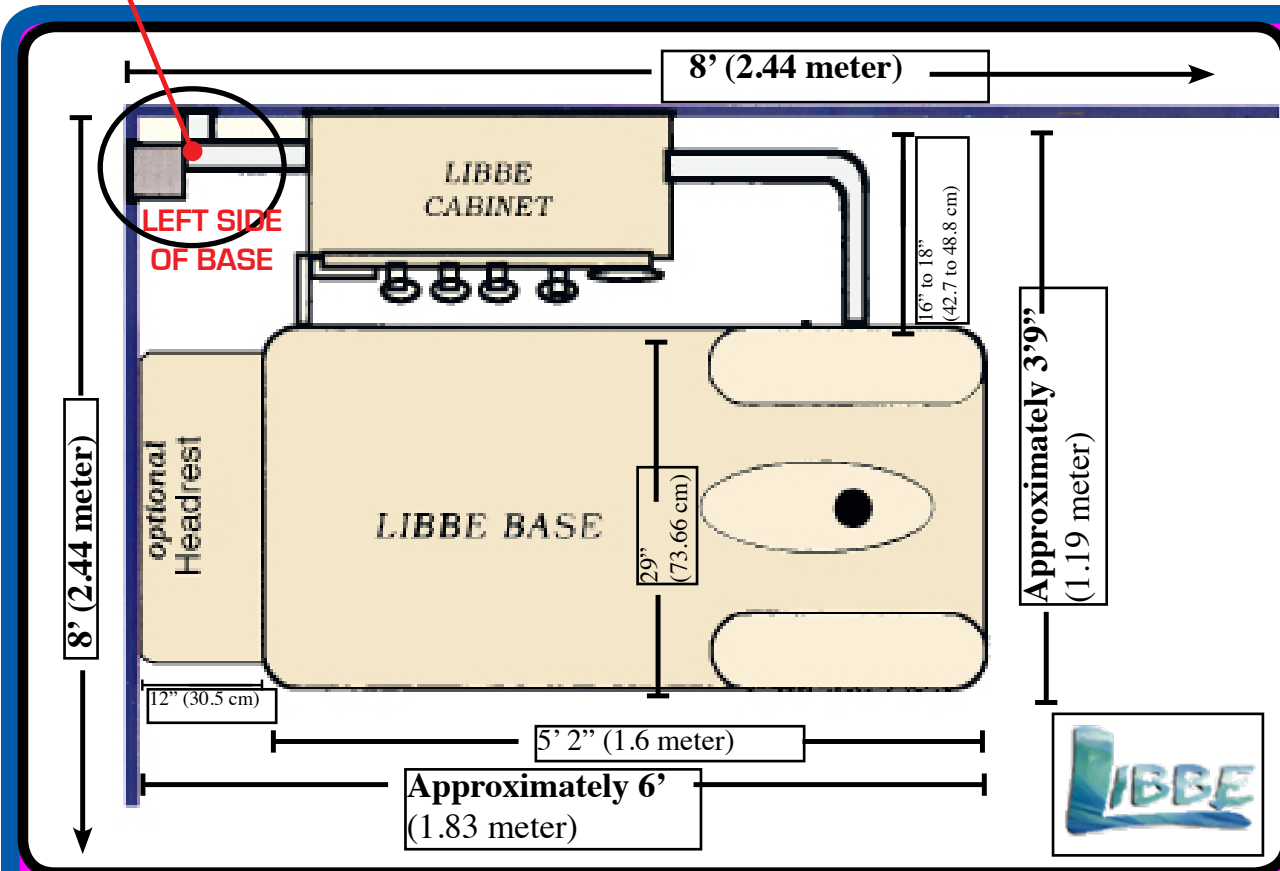


LIBBE System Room Set Up & Plumbing Installation

In Corner of Room: Rough Plumbing Connections include:
Hot & Cold Water Supply, Waste line, Independent Vent Line, plus a G.F.C.I. Electrical Outlet -
ALL CONNECTIONS MUST be INSTALLED on LEFT SIDE of LIBBE BASE in CORNER of Room!



Room Layout & Installation Instructions



Manufactured By:
Tiller MIND BODY Inc.
10911 West Avenue
San Antonio, Texas 78213
210 308-8888
Fax 210 349-5679

www.colonic.net
Worldwide since 1995



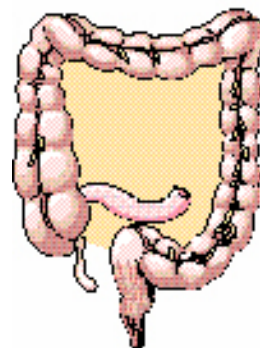
**Systems Built 2015
and After have
Serial Numbers
Starting with "E5-**

Systems Built from
8/2001 to 2014
Have older Parts & Instructions

Systems built 1995 to 7/2001
Have obsolete parts not available.
Contact Manufacture with
the System Serial Number



*FDA Registered
COLON HYDROTHERAPY
SYSTEM*



WHAT IS Colon Hydrotherapy?



Colon hydrotherapy is referred to as Colonics, colon irrigation, or high enemas. All of these are names for colon hydrotherapy which uses water for inner cleansing of the Large Intestine.

A soothing flow of filtered, ultra violet purified warm water is instilled gently into the colon through a disposable colonic nozzle inserted into the rectum to cleanse (evacuate) the contents of the lower colon.

The system is designed to allow evacuation of the contents of the colon during the administration of the colonic irrigation. The pressure, temperature, and flow of water can all be safely regulated throughout the procedure.

Colon hydrotherapy is clean and relaxing.

FDA Intended Use:

Colon Irrigation Systems, are prescription Medical Devices for colon cleansing, such as before radiologic or endoscopic examinations, or when medically indicated.

www.colonic.net

Section One of Two Sections

Room Set Up Instructions

For New Locations - Check with Landlord of recommended Plumbers or Maintenance Personnel that can provide the Plumbing and Electrical Requirements for Room Set Up.

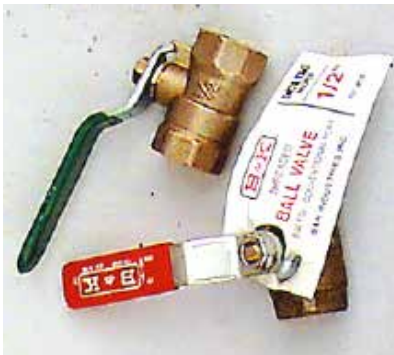
When Landlord has no preference then...

Make copies of Part One Instructions and get at least THREE QUOTES!

Beware of those that do not have a business address or want all money up front. The Licensed Plumber will need two Ball valves and any pipes needed to run the Hot and Cold Water lines and Waste Line.

If you need some advice - draw a picture of room and show where plumbing is currently, then Fax or email pictures to us and we will be happy to review with some suggestions. (Graph Page provided Page 13.)

Phone 210 308-8888 For Technical Email: Tomt3rd@colonic.net



15 amp. G.F.C.I.
Ground Fault Circuit
Interrupter
On your Wall.

EACH LIBBE ROOM WILL NEED -

- Two - Female Ball Valves - 1/2" (12.7mm) Threaded
ONE **Hot** & ONE **Cold** Water Line

Do not use substitute Ball valve fittings.

Water Line Hoses, PVC Trap, Five Feet of 2" PVC Pipe, the Clear View Tube, the Odor Control Fan System and other CPVC Fittings are included with LIBBE. (See Page 14. - Packing List)

- **One - G.F.C.I. Wall Outlet**

The Licensed Electrician will need to install:

One Ground Fault Circuit Interrupter, 15 amp.

(To meet United States or International Electrical Codes.)

Note: You will need an additional Electrical Outlet IF you are adding an optional Hot Water Heater under the base.

(Water Heater Installation - Page 22.)

- **You will need**

One - Mirror from Hardware Store or Walmart called a "Door or Closet Mirror" usually about 50 inches Long and comes with a choice of Colored Frames. (Page 29)

A Complete Packing List of PARTS INCLUDED is found on Page 14.

LIBBE TECHNICAL INFORMATION

WHO CAN LEGALLY USE / OPERATE THE LIBBE?

THE LIBBE SHOULD ONLY BE OPERATED BY A LIBBE TRAINED COLON THERAPIST.
MERE READING OF THE "LIBBE USER OPERATION MANUAL" IN NO WAY QUALIFIES
A PERSON OR PERSONS TO USE A LIBBE COLON HYDROTHERAPY SYSTEM!

Training **MUST** be completed at a LIBBE Recognized School!

LIBBE SYSTEM CLASSIFICATION:

"LIBBE" Colon Hydrotherapy System (Medical Device) & Nozzles, (class II.) are Manufactured in compliance and have met or exceeded the Sanitation, Safety, Plumbing & Electrical Standards required by the USA FDA (Food and Drug Administration), ISO, CE, & EU (European Union), TGA (Australia) Tiller MIND BODY, Inc. as Manufacturer of the LIBBE has completed Licensing for United States, Health Canada, Australia, Europe and others.



LIBBE SYSTEM PRESCRIPTION STATEMENT:

FDA & USA Federal Law restricts a Medical Device to sale by or on the order of a physician or licensed Health care practitioner. This includes all International Countries Medical Device Licensing, operating standards and regulations.

LIBBE SYSTEM POPULATION USE:

FDA (class II) Colonic Irrigation Systems are prescription medical devices and intended for colon cleansing, when medically indicated, such as before radiologic or endoscopic examinations, as identified 21 CF R 876.5220.

LIBBE SYSTEM WEIGHT LIMIT:

Weight limit for the LIBBE System is 500 lbs. / 227 kg.

FOR SERVICE OR TROUBLESHOOTING:

First Review the Quick Reference Guide! If no resolution - The Trained Therapist **MUST** be in front of System and phone Technical support. **99% of issues are easily handled by phone!**

Official Requests for Copies of our Manufacturing Licenses from FDA (USA Food & Drug Administration), and these International Countries, such as; Health Canada, European Union (EU), Australia (TGA), ISO 13485, CE, AND/OR the MET LABS Electrical Testing must be in writing and include a statement acknowledging documents are proprietary.

ALWAYS CONTACT MANUFACTURER FIRST!

Tiller MIND BODY, Inc. 10911 West Avenue, San Antonio, Texas 78213 USA.

E-mail: info@colonic.net Office: 210 308-8888 Fax 210 349-5679

LIBBE ROOM SET-UP WITH THESE IDEAL CONFIGURATIONS

Ideal room size is 8' x 8' (2.44m x 2.44m) or room may be Larger.

[Rooms smaller than 8' x 8' will be very tight and will prevent Wheel Chair access.]
However a room size 6'6" (2.1m) wide x 8' (2.5m) long, for installation in personal residence will work.

The Wall that LIBBE Base (table) is placed parallel to, (shown here as "Cabinet Wall")
Must be a minimum of 8' (2.44m) wide - This Wall should have no doors or obstructions.

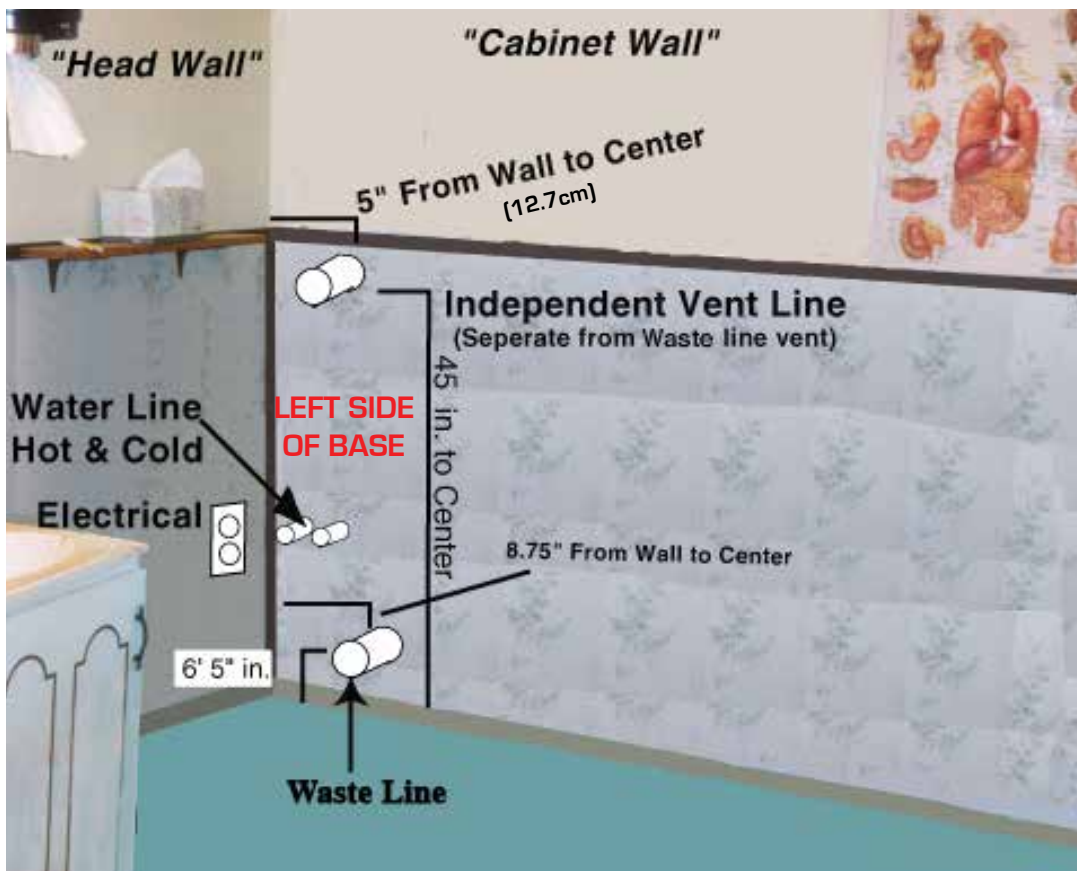
"LIBBE" MUST be Installed with PLUMBING on LEFT SIDE of Device! (Usually in a corner)

(Note: Right side Installation should NOT be considered! - Installing on wrong side will prevent
A safe gravity flow and waste line will not drain properly! You will end up with excessive plumbing costs!)

Important that the center of PVC pipe (Waste Line) is no higher than 6 -1/2" (17cm) above the
Floor and no more than 8 -3/4" (22.2cm) from the corner of the wall.
For proper draining of waste material.

Option 1. Diagram shows The LIBBE Cabinet hangs on the wall shown here as **"Cabinet Wall"**

A dedicated toilet and sink should be nearby, but should **NOT** be in the LIBBE room.
This will delay timing for next scheduled session, as client will be detained and you cannot clean Device.

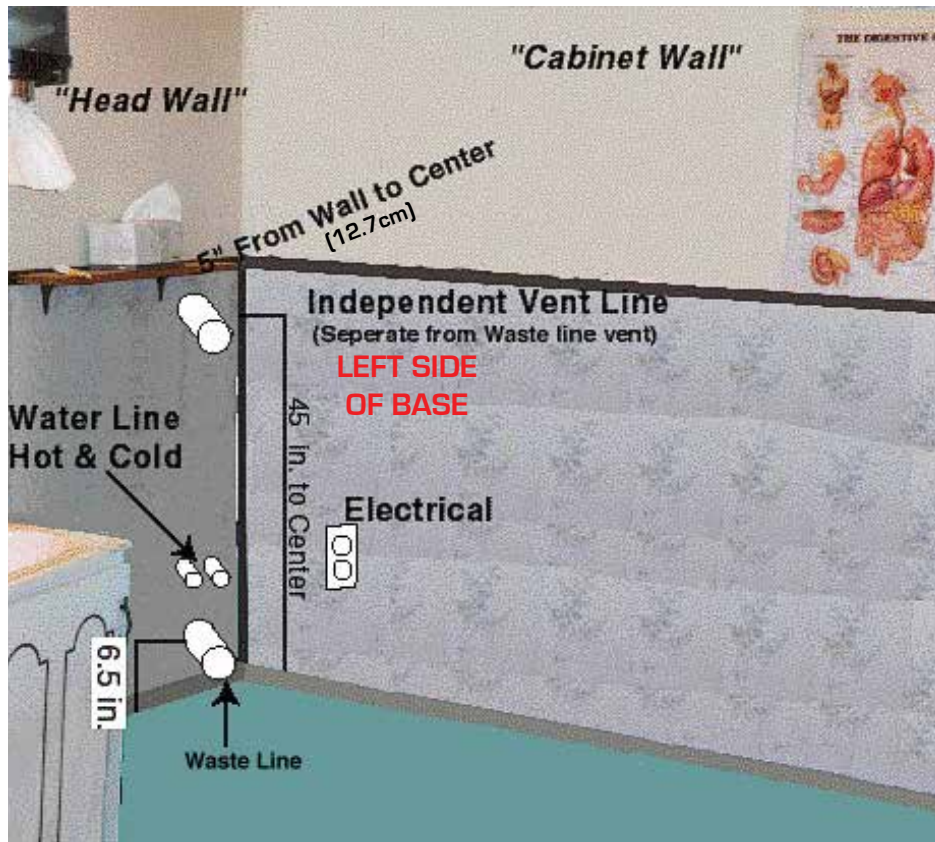


Option 1
Plumbing/Waste Line
Coming through
"Cabinet Wall"

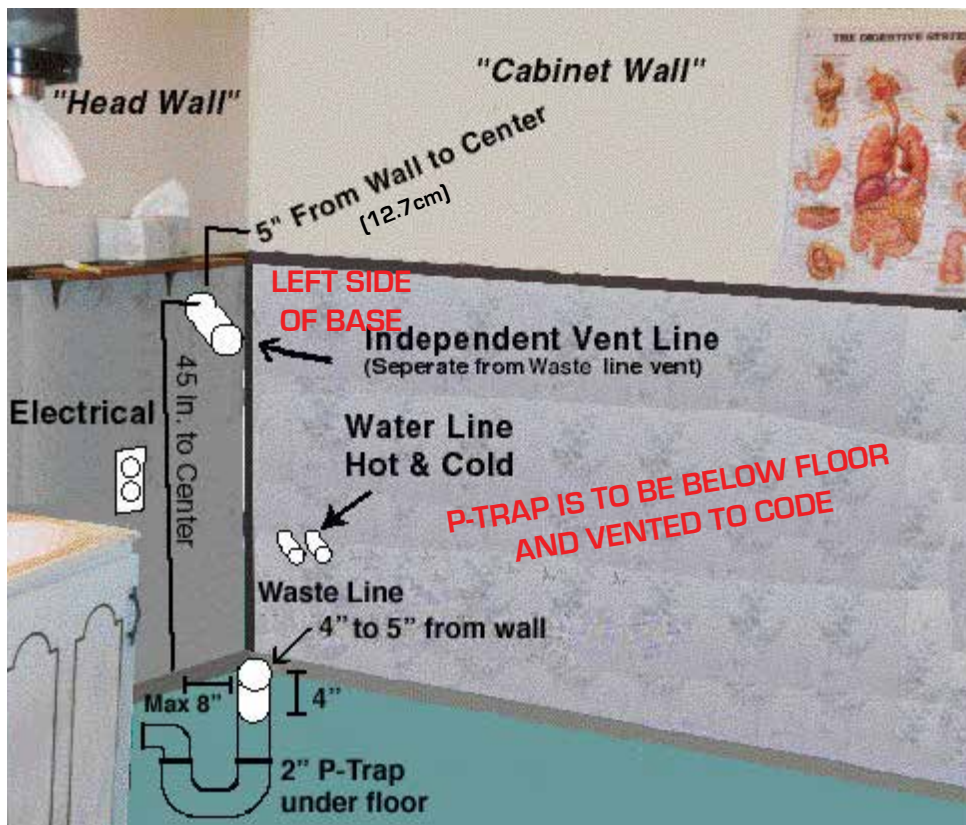
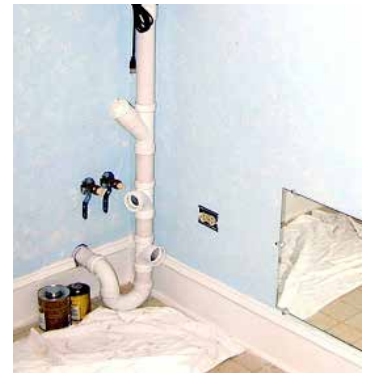


**Waste Line
coming
Through
"Cabinet Wall"**

LIBBE ROOM SET-UP ROOM OPTIONS FOR PLUMBING



Option 2
Plumbing/Waste Line
Coming through
"Head Wall"



Option 3
Plumbing/Waste Line
Coming through
"Floor"

LIBBE PLUMBING ROOM SET UP REQUIREMENTS

1 of 3.) WASTE LINE / DRAIN LINE- (Vent as Codes Require)

- The 2" (5.1cm) PVC pipes **(Five Feet of 2" White PVC PIPE is shipped with LIBBE)**
- PVC pipe (waste Line) located NO HIGHER than 6-1/2" (17cm) to center of 2" PVC Pipe from the Floor. (Out of wall near corner, just high enough for P-Trap to fit)
- Leave a minimum of at least 5" (12.7cm) PVC extended through the wall or extending Up from the floor (as from slab or a basement).
- Waste Line must be located close to corner of room. No more than 8 3/4" (23cm) to Center of PVC from corner. - Waste/Drain line vented as Necessary for drainage.

Note: DO NOT Install a P-TRAP Inside Wall or Under Floor. (Prevents Double P-traps.)

P -Trap, Pipe and Fittings shipped with Device, to be connected at time of Installation.



Waste Line
coming
Through
"Cabinet Wall"

LEFT SIDE
OF BASE



Waste Line
coming
Through
"Head Wall"



Odor Control Fan
Shown here going up
into the ceiling

2 of 3.) INDEPENDENT VENT PIPE LINE IS DESIGNED TO CONTROL ODOR!

This LINE is separate from the VENT LINE and Runs Independently to the Atmosphere.

Important - Do not attach the Odor Vent Line to the Waste Line, or to any other Vent Lines! An Odor Control Fan System will be attached.

(2" PVC Pipes, P-Trap, Fittings and the Odor Control Fan System is included with LIBBE)

Note: Think of this Odor Vent System similar to a Clothes Dryer Vent.

The Odor Vent Pipe should be 45" (1.15m) from the floor and 5" from each corner to the center of the 2" PVC (5.1 cm). The Odor Vent Pipe may be installed inside or outside the wall, leaving a minimum of 5" (12.7cm) PVC extending through the wall inside the room to connect Odor Control Fan as may need to replace in future.

STEP 3. Continued

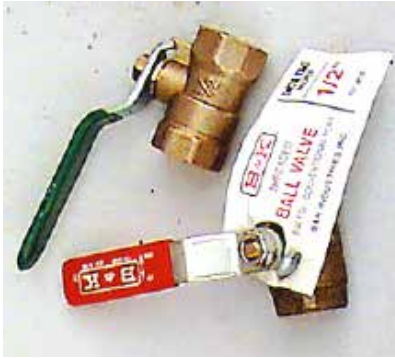
LIBBE PLUMBING

ROOM SET UP REQUIREMENTS

Continued...

3 of 3.) One HOT and One COLD Water Supply Lines:

- Two (5.1cm) - Female Ball Valves - 1/2" Threaded (12.7mm) - no higher off the floor than 30" (76.2cm) Below LIBBE independent vent line and close to corner either corner.



Note: Parts for LIBBE Room will be -

Two - Female Ball Valves - 1/2" (12.7mm) Threaded
ONE Hot & ONE Cold Water Line

Do not use substitute Ball Valves.

(Ball Valves are not included with LIBBE purchase)

ATTENTION PLUMBERS

LIBBE BACK FLOW WATER SAFETY

EXCEEDS PLUMBING CODES!

SEE PICTURES PAGE 9. and DRAWING PAGE 12.

- There is a check valve on the LIBBE Base immediately behind the connector nozzle.
- There is a second check valve in-line before the Ultra Violet system in the Cabinet,
- Plus IF any possible Bacteria were to get past TWO Check Valves, it would have to pass thru an Ultra Violet Water Purification System which has a 99.9% safety rating, and even If bacteria were to get thru the UV system, bacteria would then have to pass Upwards through the water column and then Leap upwards more than 1-1/2 inches (5.1cm) (Open Air Gap) into the city water system, go backwards through the pump that only pumps water forward and then jump up into the water holding tank, of which has a 1 inch Open Air Gap and a Anti-siphon "Fluid Master 400" installed!

(ASSE 1002 Code Approved)

- There is also a Watts Anti-Siphon Vacuum Breaker (ASSE 1001) on the View Tube Flusher Line.
- System is designed with several Air Gaps (from 1" to 4" Air Gaps) throughout the System to prevent Back Flow!

Additional Back Flow Prevention Valves are NOT Necessary!

CAUTION!

LIBBE Medical Systems are Manufactured & Tested to meet the required USA and International safety regulations.

Any deviations (changes) from Manufacturer Installation Instructions will become the Responsibility & Liability of the Installer & Owner and Warranty will be Voided

LIBBE AIR GAPS To Meet Plumbing Codes

Manufacturer has designed LIBBE System with several Air Gaps to prevent
Back Flow (See Design Drawing on Page 12. #37.)



**FLUID MASTER 400 FILL FLOAT VALVE
INSIDE WATER TANK**

(Anti Siphon Stands **1+" above** the Overflow Inside Tank)



Connector Nozzle Draining into Base
Where Waste/Water drains
Into Waste Line **(Over 4" Air Gap)**



**TANK OVERFLOWS INTO DRAIN LINE
With A minimum of **1-1/2" AIR GAP**
Has a separate P-Trap**

PLUMBING PARTS MEET ANSI/ ASME, USA-ASSE, ASTM

Fluid Master Fill Float Valve Inside Tank - EXCEEDS BACK FLOW CODES!
Fluid-master Anti Siphon Valve (400 series) USA-ASSE 1002, Canada-CSA, Meets Mexico, Australia, British, Sweden, Singapore, Hong Kong and others!

Anti-Siphon Valves - Watts Vacuum Breaker:
ASSE 1001, ANSI A112.1.1 Watts LF288A, Canada - CSA B64

Check Valves - CPVC/EPDM 1/2 inch: (Silicone Free)
Type 360, ASTM D-2467, ANSI B1.20.1

GROHE Volume Control Valves - 29-273 Series, ANSI/ASME A112.18.1M,

MOEN - Mixing Valve - Posi-Temp Valve (Pressure Balancing Valve)
ASME A112.10.1M, Canada - CSA B-125

Female Ball Valves - 1/2 inch: (12.7mm) Threaded

PVC - Pipe: plus Fittings, Unions, Couplings etc.
ASTM D1785, ASTM D-2466, ANSI B1.20

CPVC - Pipe plus Fittings, Unions, adapters etc.: ASTM D-1598

Clear View Tube - PVC Pipe with a 90° curve is clear with no coloring

Water Pressure Tests:

Tests conducted for US-FDA and International Agencies by a; TEKMETEER, Fluke PV350 pressure Transducer module. Water pressure with Flow Control Valve full open: 1.5psi - Maximum flow rate was 2,661.66 milliliters per minute.

A Few of the Testing Symbols are:



Plumbing Inspectors: Should further code clarification be needed,

Please contact our Consultant:

Robert Stricker @ RVS Code Consulting, LLC. Email: rvs1123@gmail.com

Licenses & Certification: M 13186; I 1412; BPAT 0007361; IAPMO Certified 09553
40 yrs construction; 34 yrs Licensed Master Plumber with medical gas & multipurpose Fire Sprinkler Endorsements; 26 years in municipal code inspections; 19 yrs Chief Plumbing Inspector and 4-1/2 yrs as Director of Planning & Development Services.

ELECTRICAL Room Set up Requirements

Requires **One - G.F.C.I. 15 amp Electrical outlet from your Country installed on Wall!**
(110 volt - 60 Hz.) USA standard (110, 115 & 120 volts will work) Pull is less than 2 amps of power! The G.F.C.I. Outlet will be located on either wall within easy access so you can reach in event of re-setting, and within 5' (1.5m) of the corner near the LIBBE plumbing.

**Note: If your going to have an optional Hot Water Heater Booster, a CD Player, or Other Electric Item in Room you will need a separate Electrical Outlet.
Never plug anything else into the LIBBE System!**



⚠ **CAUTION:** Grounding reliability can only be achieved when this equipment is connected to a matching receptacle and should be checked periodically.
DANGER: To reduce the risk of electrical Shock, **NEVER** open the Electric Control Box (Encapsulated Fiberglass Box).
There are No Serviceable parts inside. Warranty will be Voided if Opened!
Risk for explosion exists if used in the presence of flammable gases or liquids.

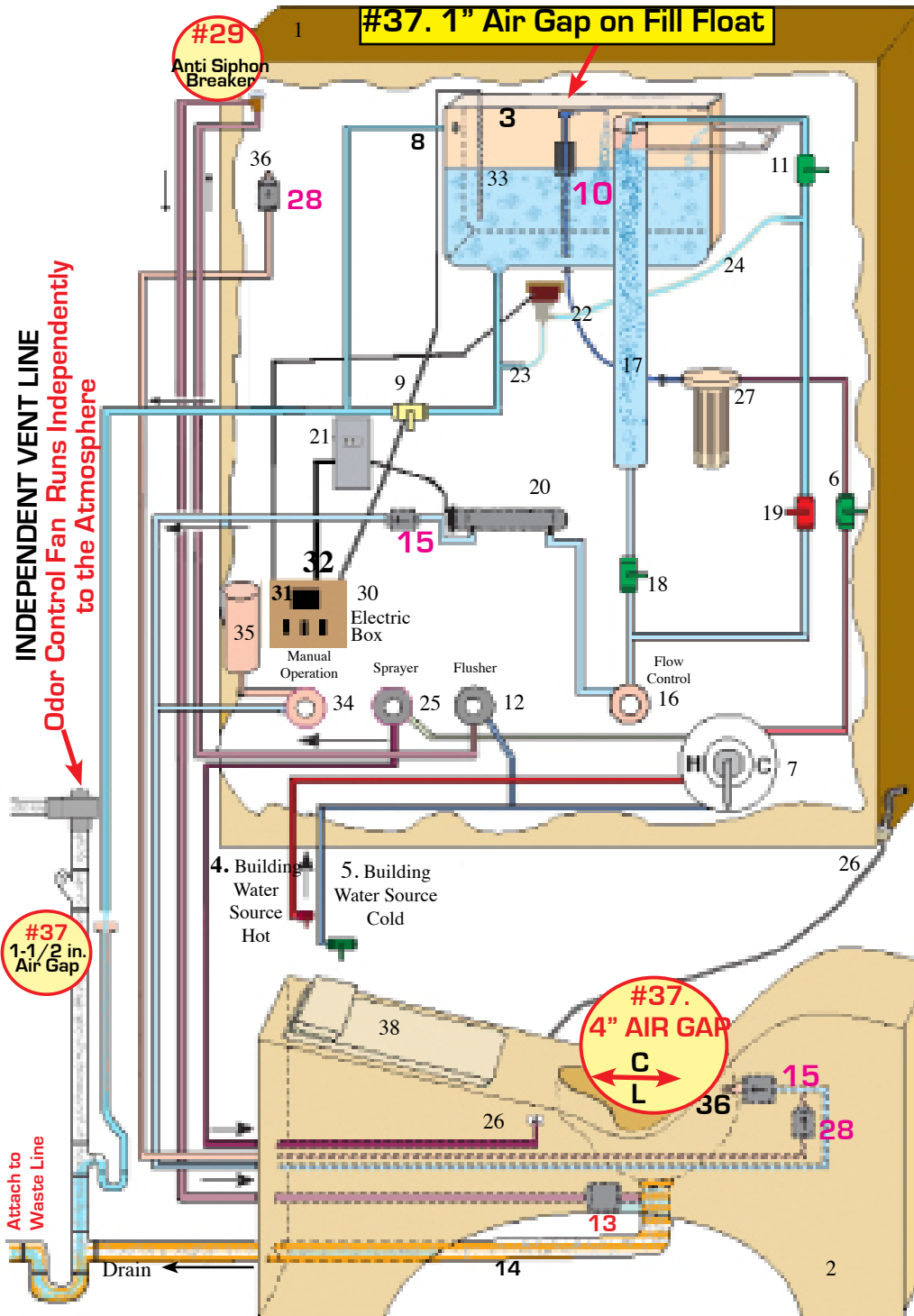
⚠ **CAUTION:** Do Not operate LIBBE Device in a Condensing Atmosphere.
WARNING: Other Cables and accessories may negatively affect EMC.
Portable RF Communications equipment, including antennas, should be used no closer than 12 inches (30 cm) to the LIBBE System.

Electrical Components used are UL Listed

- **G.F.C.I.:** Ground Fault Circuit Interrupter, 15 amp. For United States or International Electrical Codes.
(G.F.C.I. Not included with Device)
- **LIBBE Electric Control Box on 2015 & Up** (Two 3 amp Fuses) 110 volt - 60Hz. USA., Canada Standard.
All Electrical components are **UL** listed & pull less than two amps)110, 115 & 120 volts,50/60Hz.
- **CONTROL Temperature Controller (TC):** Partlow 1160+ 100-240V. 50/60Hz, Normal Operation: 98°F to 102°F
The TC Temperature Perimeters must be programmed and calibrated by LIBBE Device Manufacture!
NOTE: Should water temperature go above 104°F (40°C) +2°, the TC shuts off electrical current to pump.
NEVER TAMPER WITH MANUFACTURER PRE-SET TEMPERATURE SETTINGS!
Manufacturer MUST Provide Written Instructions when and how to REMOVE Temperature Controller COVER GUARD
- **PUMP:** For Circulating Water Inside Tank: UL. Recognized under the UL. Component program
March Pump 1A-MD-1/2 Mag Drive Pump C.S.A. Approved under File NO. 40072.
- **Odor Control Fan System:** HP; 1/125 V:115CFM @ 0.500 - In SP 23 UL Listed E474179
- **Ultraviolet Water Purification:** Made in Canada, EPA# 57987-CN-00, CE, **Bulb** Rated; 9,000 hours use.
To Keep water Purified - Replace Bulb every 12 months. (IF U Instructions in LIBBE Operations Manual)
- **View Tube 16" Light Bar:** Model #UC1011-WHG-16FO-U approx. 36,000 hours. 0.095-watt (152.4cm),
- **Medical Grade Isolation Transformer:** Made in USA, **UL, cUL** (Canada), **IEC/EN** (Europe), ANSI/AAMI

"LIBBE" DESIGN DRAWING

Proprietary Document For Licensed Plumbers
- to show "AIR GAPS" and why
Back Flow Preventer's are NOT Necessary.

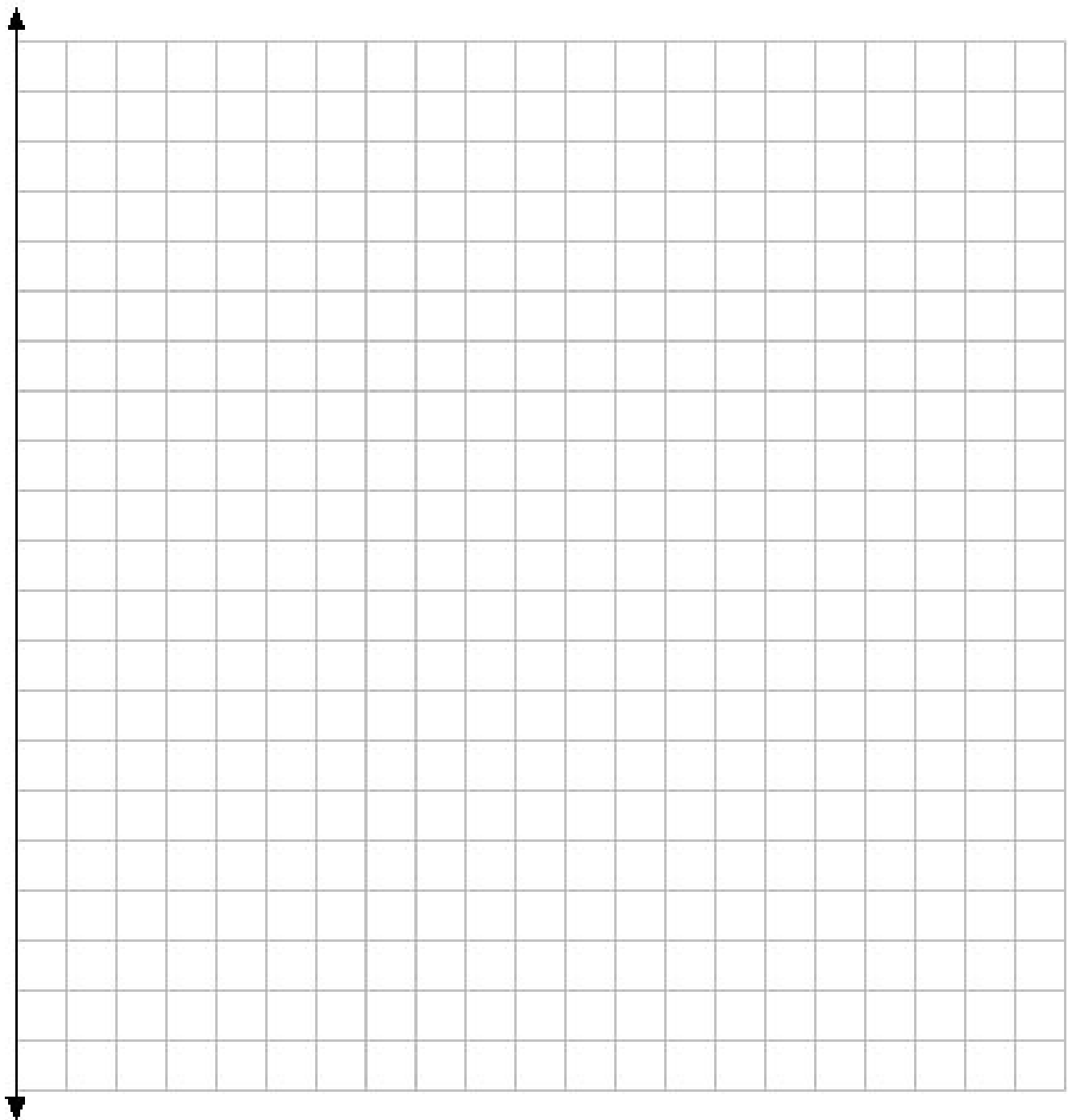


1. LIBBE Cabinet
2. LIBBE Seat Base (table)
3. LIBBE Water Tank
4. Building Hot Water In - Ball Valve
5. Building Cold Water In - Ball Valve
6. Tank Fill -Valve # 2* (Green)
7. Temperature Selector Lever (Mixer valve)
8. Tank Over Flow
9. Tank Drain -Valve # 5* (Yellow)
10. Fluid Master 400 Fill Float
11. Column Inlet -Valve # 1* (Green)
12. Water Flusher -Knob
13. Water Flusher Jet (In Base)
14. Clear View Tube
15. One-way Check Valves TWO
16. Flow Control -Knob
17. Water Column
18. Water Column -Valve # 4* (Green)
19. Pump Shutoff -Valve # 3* (Red)
20. Ultraviolet Water Purifier
21. UV Controller Ballast
22. Water Pump
23. Pump Suction Line
24. Pump Discharge Line
25. Water Sprayer -Knob
26. Sprayer Hose Assembly and head
27. Filter System
28. Oxygen Line check valves TWO
29. Anti-Siphon (Vacuum Breaker)
30. Electric Box (Switch Control Panel)
31. Temperature Controller (TC)
32. Temperature Controller Display
33. Temperature Probe
34. Manual Operations - Knob
35. Manual Water Column
36. Connector Nozzle
37. Air Gaps (Meets Code)
38. Back & Headrest Cushion

For Water Quality and Safety:
The LIBBE is designed to prevent water flow from going backwards.
Refer to diagram numbers below:
37 - Air Gaps (Per Code)
15 - One-way check valves (2 places)
29 - Anti-siphon Vacuum Breaker
10 - Fluid Master 400 Fill Float

Name: _____

Drawing a Line Graph



**USE TO DRAW OUT
SIZE OF ROOM, DOORS or WINDOWS
PLUMBING / WASTE Lines**

Fax 210 349-5679 OR scan/email: tomt3rd@colonic.net

LIBBE CRATE PACKING LIST

ALL ITEMS ARE CHECKED OFF "TWICE" BEFORE CAREFULLY PACKED INSIDE SHIPPING CRATE

LIBBE Serial # _____ (Supplies are checked off on Invoice!)

LIBBE Cabinet style: Wood Maple _____ Fiberglass _____ Refurb _____

Temperature Control (TC) Programmed: Fahrenheit _____ Celsius _____

_____ LIBBE Fiberglass Base AND _____ LIBBE Base Lid

- _____ One - Set of Cushions (2Pc) In Clear Plastic Bags
- _____ One - Cabinet Cleat Wood (To Hang Cabinet on Wall)
- _____ One - Clear View Tube Setup (and One Compression Coupling)
- _____ One - View Tube Light

Customer: _____

DATE: _____

SHIPPING Department:

Supplies By: _____

Packed By: _____

- _____ Mark Serial # on TC
- _____ Mark Serial # Cabinet
- _____ Test Check Valve/Base
- _____ Cleat Label on CLEAT
- _____ All LABELS on CRATE

SAMPLE

IN SMALL BOX TOGETHER (Labeled with Contents)

- | | |
|-----------------------------------|--|
| _____ One - U.V. Light Bulb | _____ One - LIBBE OPERATION NOTEBOOK |
| _____ One - Filter Wrench Tool | _____ - LIBBE Plumbing Installation Instructions |
| _____ One - Plastic Handle Mop | _____ - LIBBE Quick Reference Guide |
| _____ One - Mop on a Rope (Snake) | _____ - MSDS (Material Safety Data Sheet) |
| | _____ - SOP (Standard Operating Procedure) |

IN SMALL (10X8X6) BOX TOGETHER (Labeled with Contents)

- | | |
|---|--------------------------------|
| _____ One - Blower Motor Setup (Odor Control) | _____ One - Silicone Tube |
| _____ One - Set of Screws to Install the Cabinet Cleat (wood) | _____ One - PVC Glue |
| _____ One - Sprayer Hose Hook (Install on Side of Cabinet) | _____ Two - 3/4" 90 Elbow |
| | _____ Two - 1/2" Threaded Male |

LIBBE PLUMBING CONNECTIONS/PVC & CPVC Fittings inside a Plastic Bag

- | | | |
|-----------------------------|-------------------------------|------------------------------|
| _____ Two - Sanitary Tee | _____ One - 3" to 1 1/2" | <u>PVC PIPE inside Crate</u> |
| _____ One - 45 Sanitary Tee | _____ One - 2" Short 90 Elbow | _____ ONE - 2" (5' LONG) |
| _____ One - Clean Out Plug | _____ One - 2" P-Trap | _____ ONE - 1 1/2" (2' LONG) |
| _____ One - 2" to 1 1/2" | _____ One - 1 1/2" P-Trap | _____ ONE - 3/4" (2' LONG) |

4



PHYTOSANITARY DECLARATION

All Wood Materials used in System or Crate Construction meet the IS-PM #15 Regulations.

All wood panel components have been Manufactured from Canadian or European Plywood and is exempt from regulation, According to IS-PM #15.

Crate Manufacturer is an I.P.P.C. Certified Manufacturer and approved for Export.

Number CA-00009

CRATE SIZE: 66"(168cm) Long X 54" (127cm) High X 34" (86.4cm) wide
WEIGHT: 400 to 500 Pd's. (182 to 227kg) Depending on Amount of Supplies

Section Two - System Installation Instructions

**After Room Set-up is Completed,
LIBBE May Then Be Installed by
YOU or your Plumber!**

**FOLLOW INSTRUCTIONS
OR LIBBE WILL NOT
FUNCTION SAFELY!**

**SUGGEST YOU PRINT OUT THE FRONT 14 PAGES AND
GET AT LEAST THREE QUOTES FROM AREA PLUMBERS**

CAUTION!

**LIBBE Medical Systems are Manufactured & Tested to meet the required USA
and International safety regulations.**

**Any deviations (changes) from Manufacturer Installation Instructions will become
the Responsibility & Liability of the Installer & Owner and Warranty will be Voided**

Section Two

How to Install LIBBE

<u>Instructions:</u>	<u>Page</u>
Packing List of Parts Shipped	14
Page of Contents	15
Install Cleat & Cabinet	17
Overview of Plumbing Measurements	18
Review Measurements	19
Plumbing Stack	20
Odor Control Fan Installation	21
Optional Water Heater Booster	22
Clear View Tube	23
Hoses Cabinet to Base (color coded)	23
Install Base to Floor & Headrest	24
UV Bulb Installation (Devices Built 2015 & After)	25
Carbon Filter Installation	26
Electric Power Cord Connections	27
Mirror Installation	28
Probe Check and Pump Switch trouble	28
Diagram of Flow Water, Air, Waste	29
Picture of 2015 and up LIBBE	30

CAUTION!

LIBBE Medical Systems are Manufactured & Tested to meet the required USA and International safety regulations.

Any deviations (changes) from Manufacturer Installation Instructions will become the Responsibility & Liability of the Installer & Owner and Warranty will be Voided

**SUGGEST YOU PRINT OUT THE FRONT 14 PAGES AND
GET AT LEAST THREE QUOTES FROM AREA PLUMBERS**

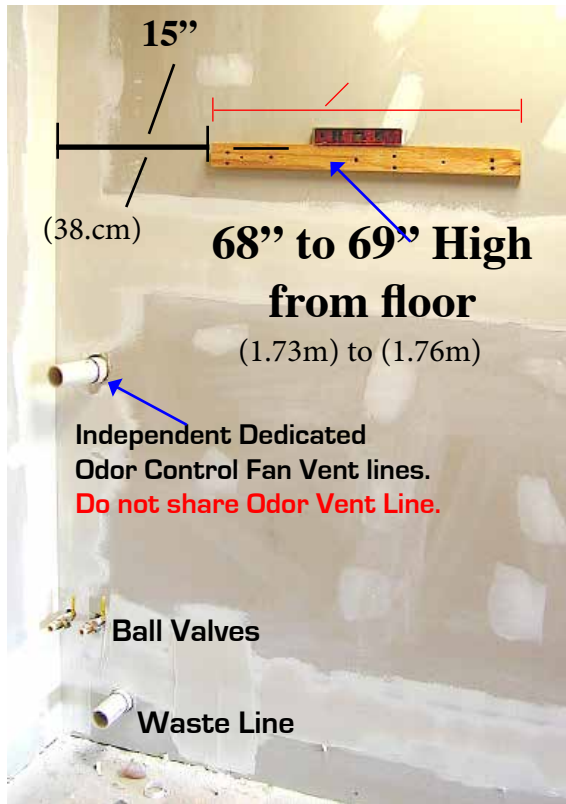
Quotes from Plumbers and Notes:

Cabinet Installation

Cabinet Size 30" Wide by 36" Tall and 16" Deep (with knobs)

[76.2cm Wide, 91.44cm Tall and 40.64cm Deep]

Start with 30" Wall Cleat (76.2cm)



From floor to top of wood cleat is 68" (1.73m)
From corner of room to cleat is 15" (38.cm)

MAPLE WOOD CABINETS:

Stained Wall cleat is included and attached to bottom back of the Cabinet with two screws - Remove from cabinet and follow height Instructions.

FIBERGLASS CABINETS:

Painted Wall Cleat is included and wrapped together with view tube light. See Instructions

Four 2-1/2" Wood Screws Included

Screws in Zip Lock inside Blower Motor box.

NOTE: If Wall is Brick, Stucco or other - then purchase/use Anchor Bolts to Secure Cleat.



Stained
Wall Cleat

Cabinet Cleat
Attached to Cabinet
Do NOT Remove this
cleat from Cabinet

Be Sure Wall Cleat is Level,
Attached Securely
and Strong!

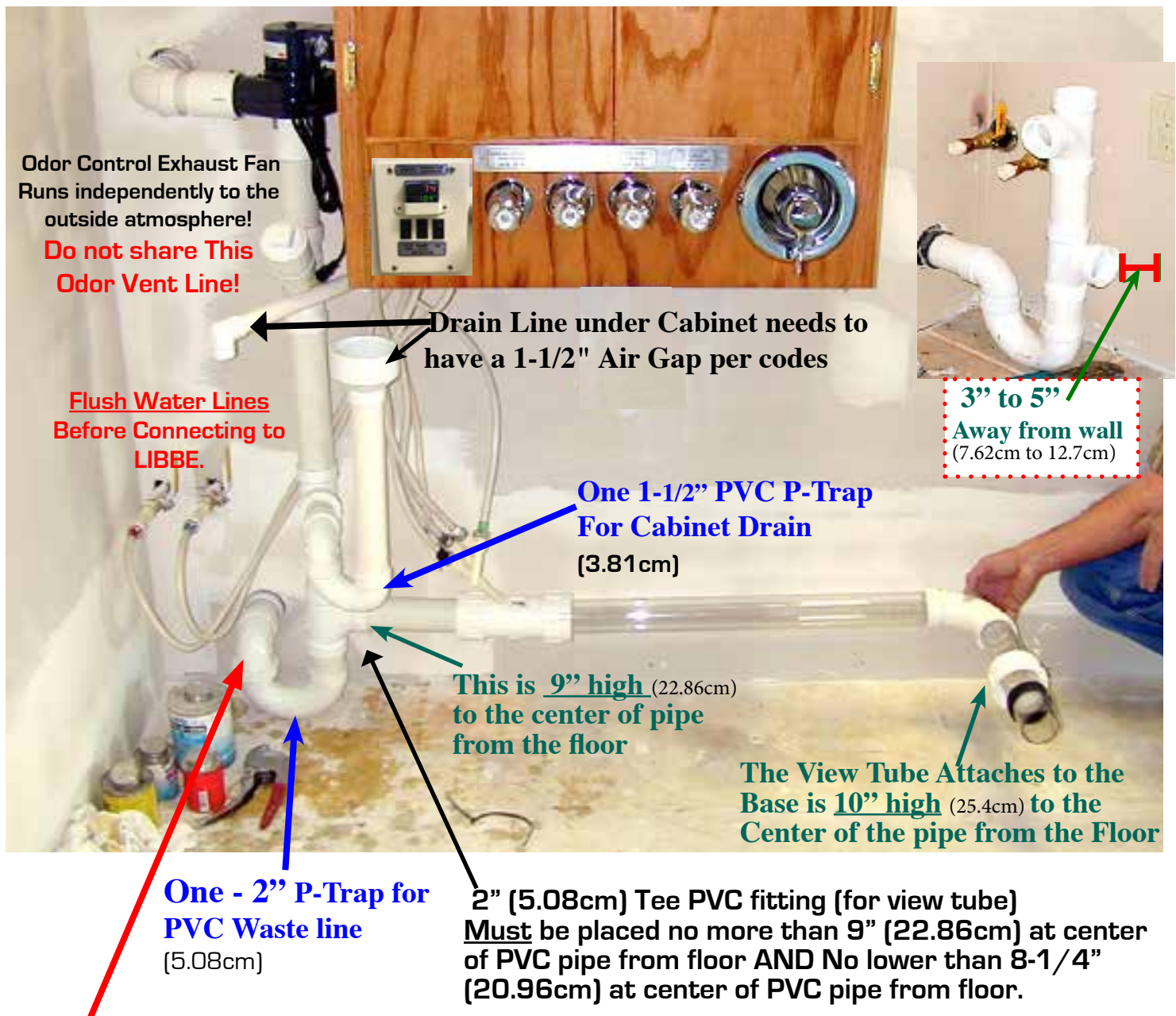
Lift the cabinet up and then down
onto the wall cleat that has been
Securely attached to the wall.

Will cleat hold your weight?
To Check: Chin yourself & see.

OVERVIEW OF Plumbing Connections

Use pictures as a guide to prepare PVC pipes for installation.

(Note: PVC Pipes and fittings are included with LIBBE ready to be cut to size.)



2" (5.08cm) PVC Waste Line (extending out of wall)

Must be **6 1/2" (16.51cm)** (to center of PVC pipe) up from the floor with its own normal waste vent That is Not attached to LIBBE Odor Control Fan.

The LIBBE Odor Control Fan System **MUST** be installed in a Dedicated Line - **Do not share this Vent Line.** If the **Waste** PVC pipe is higher than **7" (17.78cm)** at center of pipe, It may not Drain!

Do not Attach Multiple LIBBEs to other Odor Control Fan Vent lines.

Each LIBBE has to have its own **Independent Odor Control Vent Line**

Odor Control Fan Vent Pipe Lines are **NOT** connected to Waste Line Pipe Vent!

Must have Two PVC P-Traps, One 2" & One 1-1/2" to prevent odors from entering into room.

Build Plumbing Stack Review Measurements Pages 17, 18,



Water Tank Drain Line under Cabinet needs to have a 1-1/2" Air Gap that meets required codes

PVC Pipe
Clean Out Plug!

Drain from Cabinet
Is 3/4" (1.905cm)
cpvc Pipe with 1-1/2" Air Gap



Flush Water Lines
Before Connecting to
LIBBE Hoses.

Drain water into
A Bucket to
remove any
plumbing glue
or sediment!

Building The LIBBE PLUMBING STACK

(NOTE: 2" (5.08) PVC Pipes and Fittings, Wood Cleat and Fan System are packed inside crate.)



Note: You Will Need for:
Hot & Cold water lines
Two - Female Ball Valves - 1/2"
[12.7mm] Threaded
Do not use substitute ball valve fittings.



Always Flush Water Lines
Before Connecting Hoses to LIBBE!

LIBBE Odor Control Fan System

Removes Air (Odor) out of Base & the Room

Odor Control Fan System is Attached to Independent Vent Pipe Line 2" PVC (5.08cm)
 (This Pipe - VENT line is separate from the sewer vent Pipe or any other LIBBE Odor Vent Pipes)



LIBBE Odor Control Exhaust Fan Motor is attached to the Independent Odor Vent Line.
The Exhaust Fan Motor Pulls the air "odor" from the base.
 Similar to a clothes dryer vent, only this is not hot air, and the air flow is not very strong. (Weak flow)

Odor Control Exhaust Fan & Housing is Included with Device

Seal with Silicone or Caulk. Use small (1/2") screws to allow the Silicone to dry
 While holding the custom made Odor Fan Housing in place.

Be sure PVC Pipe is NOT touching the Fan Blade Wheel inside white Plastic Housing.
Do NOT Use PVC Glue. Use Silicone - makes it simple to remove later, if needed.



**The Odor Control Exhaust Fan and
 The Independent Vent Pipe
 Can be put through the
Wall to outside**

**Or Up into the
ATTIC or CEILING.**

**The Odor Vent Pipe is Separate
 From the Waste Vent Line and
 the Control Fan
 Runs Independently to
 the Atmosphere**



LIBBE Odor Control Fan & Housing - One per LIBBE Device.

⚠ Do not share Odor Vent Line with any other Waste, Drain or Vent Lines.

Optional Hot Water Booster

Optional Hot Water Heater under LIBBE Base.

(Hot water source needs to be 120 °F to 135°F) (49 °c to 57 °c)

When cold water line is all that is available or main water heater is too far away.

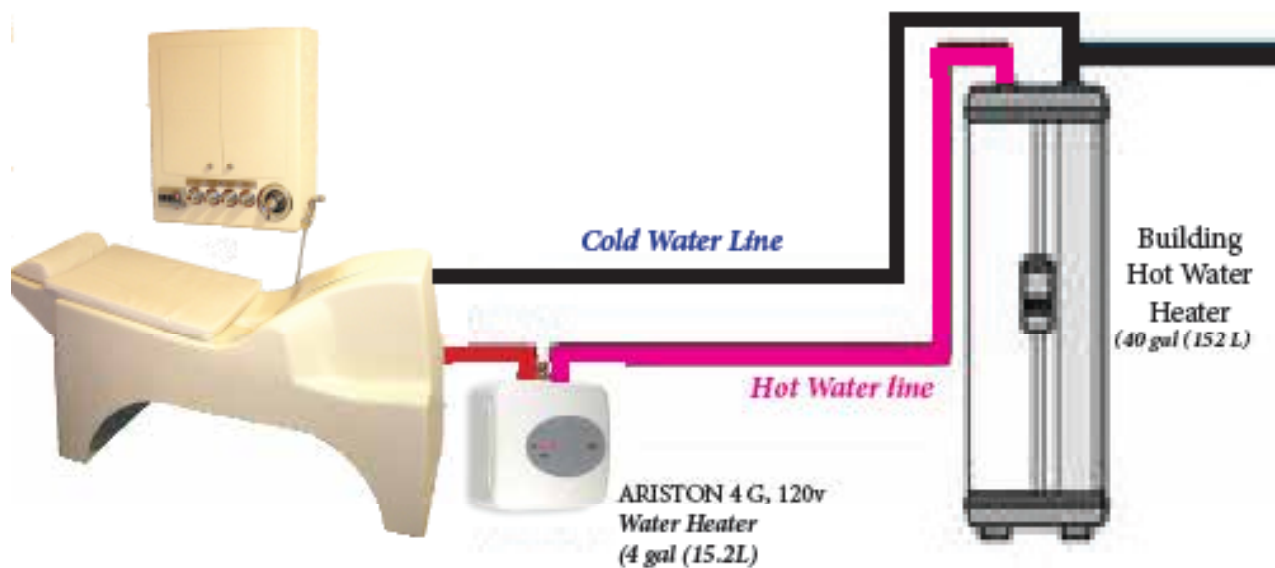
A Small Water Heater may be installed to boost heating the water.

One we found that has a thermostat and will fit perfectly under LIBBE Base is:

Ariston 4 gallon (15.2L) 120v Water Heater From plumbing supply company or www.Grainger.com - Also from retailers such as: Home Depot.

Note: Hot Water Heater Requires a separate Electrical Outlet.

NEVER Plug Hot Water Heater into Electrical Outlets on LIBBE SYSTEM!



Optional Water Heater



When Multiple LIBBEs in use or Hot water is being used other sources then we suggest a 4 Gallon BOOSTER HOT WATER HEATER of which, SHOULD FIT UNDER THE LIBBE BASE

Picture of an optional 4 Gallon Hot Water Heater, to act as a Booster that will fit under the LIBBE System Base (table).

CAUTION!

LIBBE Medical Systems are Manufactured & Tested to meet the required USA and International safety regulations.

Any deviations (changes) from Manufacturer Installation Instructions will become the Responsibility & Liability of the Installer & Owner and Warranty will be Voided.



Attach Clear View Tube to Base

Clear View Tube will need to be cut to size, after you complete the measurements. **Gently Install NEVER FORCE** Into Position...!

GENTLY Move the Base into position... Then secure to the Floor!

Using force - Will Break the seal on the Drain in the base and cause seal to Leak. Call if this happens!

(It is Very Difficult to Repair a broken seal on the Base Drain)



Waste and Water flows though Clear View Tube into Waste Line and outside to Sewer Lines
(Large Waste shown)



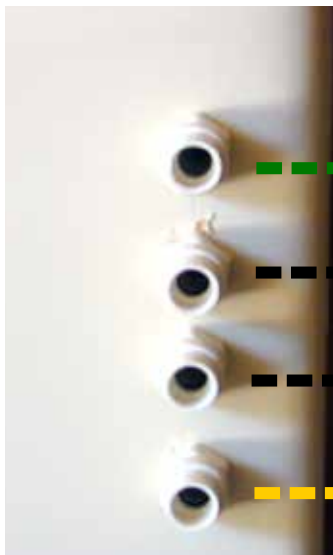
Underside of Base shows Drain that is Connected to the Clear View Tube and Waste Line.

**When Base is NOT secured to Floor and Base is bumped or moved - Drain Seal will Brake and Leak!
New Parts Required - VERY DIFFICULT TO REPLACE!**

Hose Connections from Cabinet to Base

Flush Water Lines Before Connecting Hoses.

Connect 4 SHORT Hoses Under Cabinet to LIBBE Base



--- Oxygen - **Green Taped Hose**

--- Water Flow - **Black Taped Hose**

--- Sprayer - **White Taped Hose**

--- Flusher - **YELLOW Taped Hose**

The TWO Long Hoses 60" are to connect to the:
Hot water line (**Red Tape**).
Cold water line (**Blue tape**).

To prevent debris from new plumbing clogging up the Mixer Valve or Hoses on LIBBE - Be sure to...
Flush Water Lines Before Connecting hoses.

Move LIBBE Base (table) into Position Before Attaching Base to the Floor



11" Minimum (27.94cm)

Vinyl or Tile Floor is
Best for cleanliness
(Health Dept. Frowns on Carpet!)

Base (Table) Positioning

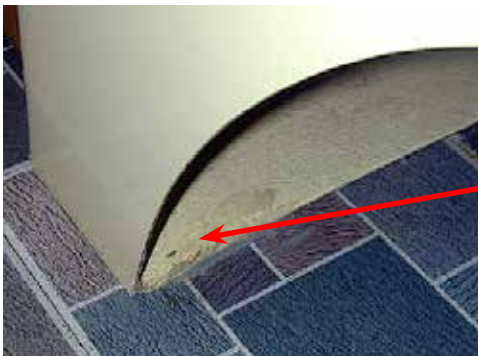
The head of Base
Should be Minimum
of 11" (27.94cm)
from the wall at floor
depending on your
preference.

The side of the Base
Under cabinet should
be 16" to 18"
Away from wall
(40.64cm) to (45.72cm)



**View Tube
3" to 5"
Away from wall
(7.62cm to 12.7cm)**

**16" to 18"
(40.64cm)**



To Keep Base from moving and
Causing Drain Seal on Base to Leak!

You MUST immediately Silicone to the Floor

or screw Both Ends of Base Feet & Attach to Floor.
The silicone on the floor can be easily removed later,
without Damaging the floor should you re-locate

Optional LIBBE Fiberglass Headrest



**--- 12" Best ---
(30.48cm)**

IF you Did not purchase Optional
LIBBE Fiberglass Headrest.... Then

YOU Will need to build something for
the cushions to stay on for Tall people
or heads will hang-off end of Base!

Bases have been built with extra
Support and Bolt Holes for the Head
Rest, to be easily installed.
You may order one at any time.



Installing or Replacing UV BULB (Very Fragile)

LIBBEs Built 2015 & after with a Serial # starting with "E"

Be Sure Power is Turned Off Before Changing Bulb!

Never look directly at an illuminated **UV BULB**. Can cause serious burns to eyes!

The Ultra - Violet (UV) Ballast (located on back wall of Cabinet) will sound Audible Tone (Beep) which means the **BULB** needs to be checked or Replaced. **UV BULB** functions best when HOT WATER Filter is changed monthly. All required to Prevent Bacteria Growth! Schedule **BULB** to be Replaced every 12 Months and then write on Maintenance Log. (Inspectors will want to see a Log for each Device.)

⚠ 1.) **DO NOT** Touch glass area of **UV Bulb** with hands. Oils from your hands can damage & shorten Life of **UV BULB**

2.) Gently install **UV BULB** into the Socket Connector. (Only fits one way.)



⚠ 3.) **Gently Slide** **UV BULB** STRAIGHT into the Glass Tube (sleeve) inside the stainless steel chamber and let it rest just inside on it's own. **UV BULB IS VERY FRAGILE** - No Warranty if you break.

DO NOT REMOVE METAL CAP
It Seals the quartz sleeve inside chamber and is VERY FRAGILE



4.) ⚠ **Careful ! Do Not Force!!**
Slide Socket Connector & **UV BULB** STRAIGHT Into the end of the Chamber

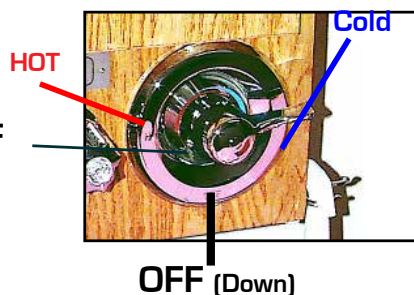


5.) Push and lock Socket **TABS**.
(Audible click is heard)

To remove UV Bulb from Chamber
Press socket top and bottom **TABS** together to unlock and slide Bulb out of chamber.

Installing or Replacing Carbon Filter

1. Turn Mixer Valve Knob OFF



Carbon Cartridge Filter

Rated: 5 Micron. and Hot Water Use.

Temp range 40-125F (4.4-51.7 C)

Reduces: Chlorine Taste, Odor, Sediment.

Change every 30 days



2. Slide filter wrench (we provided) from bottom towards the top on the filter housing.
Push wrench clockwise to loosen.
(Left Loosens, Right Tightens)



Push to Loosen
"Lefty Loosely"

3. Then turn by hand until housing is off.
Be careful some of the water will spill out onto floor.
Lower housing down below cabinet, and then pour out Water into base opening without losing the rubber O-ring
Inside filter housing. **Do not dispose of O-Ring**

4. Remove old filter Cartridge
& Discard.

5. Insert New Filter You may want to rub some petroleum jelly on **O-Ring**
It helps to make a better seal & easier to remove filter housing in the future.



6. Put Filter Housing back in place - Turn counter clockwise
(USE Hands Only - Do NOT Use Wrench!)

Do not use the Filter wrench to tighten
Filter housing, or will be very
Difficult to loosen in 30 days!

7. Turn Mixer Valve on- check Filter for leaks



(Tighten Hands Only)
"Righty Tightly"

Do not use wrench to tighten, Only to Loosen Housing!
FILTERS MUST Be Labeled for HOT WATER Use!



LIBBE Electric Power Cords!

15 amp. G.F.C.I. Ground Fault Circuit Interrupter On your Wall.



1. Install a 15 amp. G.F.C.I. Outlet on Wall.

G.F.C.I. Outlet must be located within 6' (1.5m) of either corner near plumbing to be in reach of the LEFT SIDE of the LIBBE cabinet. See Plumbing Instructions.

2. Plug the Power Cord In

(15 amp. G.F.C.I. Outlet on Wall.)

Male 5-15p cord end



LIBBE ON & OFF Switch and Cord Outlet
Located below the
LIBBE Electric Control Box (panel)



3. PLUG the Power Cord In

LIBBE Electric Control Box (panel)

(Female C13 cord end)



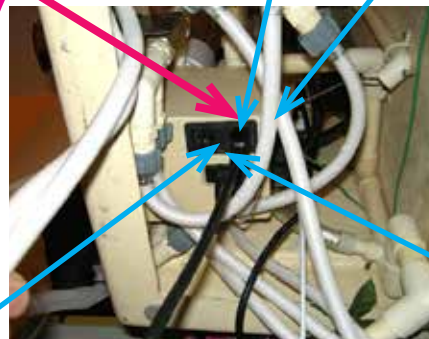
4. Power Cord [Female C13 Cord]

Plug Power Cord [Female C13]

into the bottom of

LIBBE Electric Control Box (panel)

Located on the underside of LIBBE Cabinet



On the underside of LIBBE Cabinet.

5. Power Switch is on.

If not Check Power Cords and the Fuse!

On & OFF Switch



Two
3 Amp
Fuses

Be careful the Fuse Holder
Folds over
Holder does not pull off.



**Manufacturer MUST
Provide written
Instructions when
and how to REMOVE
Temperature
Controller
Cover Guard**

Inside LIBBE Cabinet:

Electric Control Box (panel): Has THREE Cords (COLOR Labeled) They are connected to:

RED Cord (Labeled-PUMP) Cord controls the Pump and related Pump Switch.

BLUE Cord (Labeled-UV) Cord controls the UV (UltraViolet System).

The **WHITE Cord** (Labeled Odor Control FAN & Light) controls Fan (Odor System) & View Tube Light.



For Troubleshooting: The Trained Therapist Must Be in Front of Device & phone 210 308-8888

CAUTION: To reduce risk of Electrical Shock, Do NOT Tamper With or Open the Electric Control Box!

Warranty is Voided if Electric Box is opened! **There are No Serviceable Parts Inside Electric Control Box!**

Should Service be required: Remove 4 screws, unplug cords and Return Electric Box To LIBBE Device Manufacturer:

Tiller MIND BODY Inc. 10911 West Avenue, San Antonio Texas 78213 USA

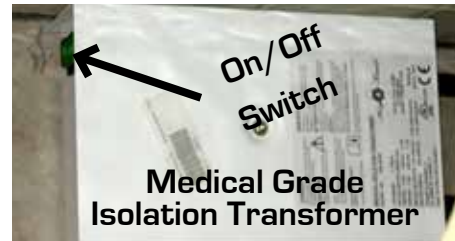


Connecting the LIBBE Power Cords to the Optional Medical Grade Isolation Transformer



1. Install a 15 amp. G.F.C.I. Outlet on Wall.

G.F.C.I. Outlet must be located within 5' (1.5m) of either corner near plumbing to be in reach of the LIBBE cabinet.



2. Plug the Power Cord In (Power Cord labeled {Isolation Transformer + G.F.C.I.})



2. Medical Isolation Transformer Plugged Power Cord Into And into the 15 amp. G.F.C.I. on Wall.

Be sure the Isolation Transformer Power Switch is on. If not Check the Fuse!
(Used Power Cord labeled {Isolation Transformer + G.F.C.I.})

3. Plug the Power Cord In (Power Cord labeled {LIBBE + Isolation Transformer})



3. LIBBE Electric Control Box (panel)

Plugged Power Cord into the bottom of LIBBE Electric Control Box (panel) Located on the underside of LIBBE Cabinet then this Cord is plugged into Medical Isolation Transformer.
(Used Power Cord Labeled {LIBBE + Isolation Transformer})

Be sure the Switch is on. If not Check the Fuse!

LIBBE **ON & OFF Switch** Located below the **LIBBE Electric Control Box (panel)** - On the underside of LIBBE Cabinet.

On & OFF Switch



Two 3 Amp Fuses



LIBBE power cord **MUST** be plugged into the Isolation Transformer and the Isolation Transformer **MUST** be plugged into the 15 amp. G.F.C.I.



NEVER Tamper With or Open the LIBBE Electric Control Box (Panel) or the Medical Isolation Transformer!
Manufacturer MUST Provide written instructions when and how to REMOVE THE TEMPERATURE CONTROL COVER GUARD!

Mirror Installation

The suggested Mirror is one from hardware store or Walmart called a “Door or Closet Mirror” usually about 50 inches Tall and has choice of colored Frames. Install Mirror About 6” (15.24cm) from floor and about half way to the right under the Cabinet. [\(Shown Here\)](#)

The LED View Tube Light is usually installed just Below the mirror (*above any coving*) and provides Light for the view tube. For the comfort of the client the room lighting can be turned off during a session.



Temperature Probe

To Check Water Tank !

Remove Top (Lid) of Cabinet then Remove Lid on Tank
Be sure the top of probe is out of the water.
Be sure fill float valve is adjusted so that the
Water level inside the tank is staying
Below the top of the probe wire.
Tank should only fill to about HALF FULL of water.
If not the Fill Float Valve needs to be adjusted or replaced.



To Install Sprayer Hook

Be sure to PRE DRILL
Small Holes before
Using a Screw.
This will prevent cracking the
Wood or Fiberglass!

Pump Switch Not Working



Electric Control Box
(panel)

Check **Temperature** Display ... {**Below 104.°F (40.°C)**
Temperature Must be reduced to **Below 102.°F (39.°C)**
on Display - Before Pump will come back on

(Pump Switch has NO Electrical POWER without a
Safe Water Temperature - - Adjust Temperature using Mixer Valve!)

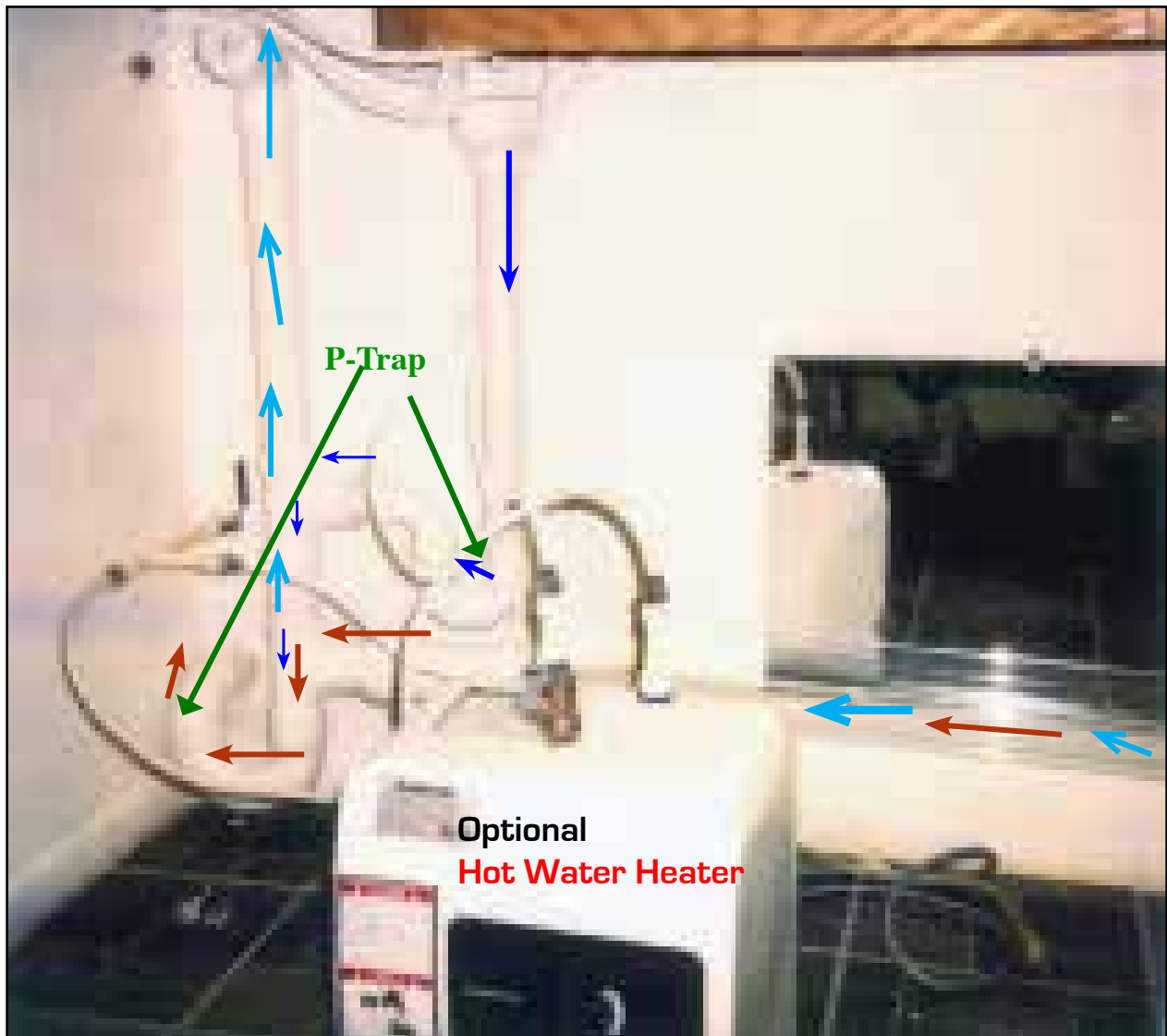
CAUTION: NEVER Turn on Pump Switch without Water in Tank!
(Pump will malfunction (melt blades) within seconds!)

Do NOT Plug any other Electrical Component or Cord into LIBBE.

Do NOT Plug any other Electrical Component or Cord into G.F.C.I. on wall.

USE Separate WALL OUTLET for any other Electrical Item.

FLOW of Water, Air, Waste



- ← **Waste, Water, and (Air as needed)** flows thru view tube & waste line into sewer.
- ← **“Odor”** is pulled by Fan out of the LIBBE Basin - up & out thru the dedicated vent line.
- ← When you **Drain Water** from Water Tank the water empties into the waste line.

Waste is heavy and goes down the clear view tube & waste line and out into sewer. The Odor Fan runs independently to the atmosphere, where it pulls the odor out of the LIBBE Base (basin) and out of the room.

CAUTION!

LIBBE Medical Devices are Manufactured & Tested to meet the required USA and International safety regulations.

Any deviations (changes) from Manufacturer Installation Instructions will become the Responsibility of the Installer and the Warranty will be Voided.



2015 and Up LIBBE Systems with Fiberglass Cabinet
 Displayed in Colonic Network School Classroom
 (shown with optional Fiberglass Headrest)