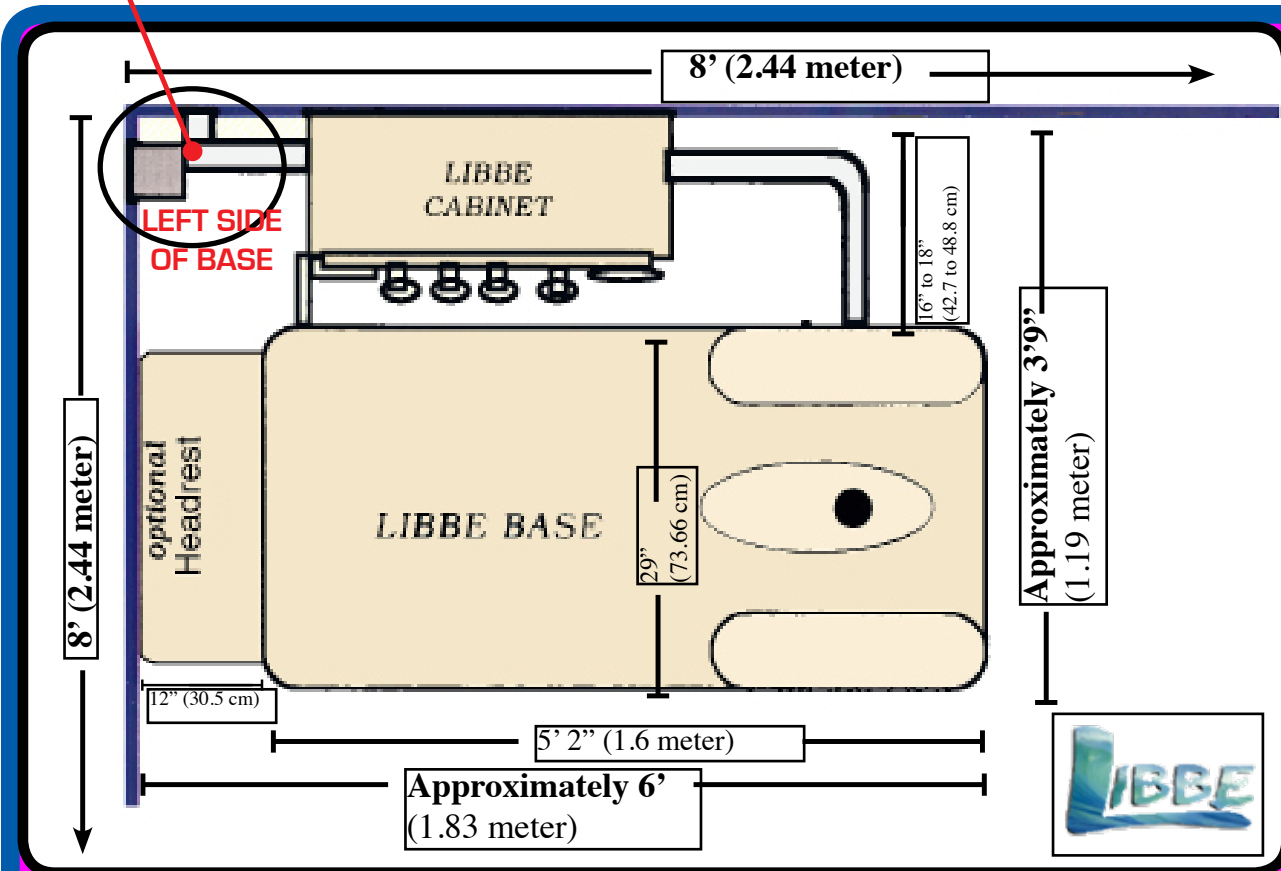


LIBBE System Room Set Up & Plumbing Installation

In Corner of Room: Rough Plumbing Connections include: Hot & Cold Water Supply, Waste line, Independent Vent Line, plus a G.F.C.I. Electrical Outlet - **ALL CONNECTIONS MUST be INSTALLED on LEFT SIDE of LIBBE BASE in CORNER of Room!**



Room Layout & Installation Instructions



Manufactured By:
 Tiller MIND BODY Inc.
 10911 West Avenue
 San Antonio, Texas 78213
 210 308-8888
 Fax 210 349-5679

www.colonic.net
 Worldwide since 1995



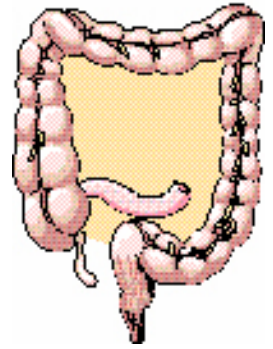
**Systems Built 2015
 and After have
 Serial Numbers
 Starting with "E5-**

Systems Built from
 8/2001 to 2014
 Have older Parts & Instructions

Systems built 1995 to 7/2001
 Have obsolete parts not available.
 Contact Manufacture with
 the System Serial Number



*FDA Registered
COLON HYDROTHERAPY
SYSTEM*



WHAT IS Colon Hydrotherapy?

Colon hydrotherapy is referred to as Colonics, colon irrigation, or high enemas. All of these are names for colon hydrotherapy which uses water for inner cleansing of the Large Intestine.

A soothing flow of filtered, ultra violet purified warm water is instilled gently into the colon through a disposable colonic nozzle inserted into the rectum to cleanse (evacuate) the contents of the lower colon.

The system is designed to allow evacuation of the contents of the colon during the administration of the colonic irrigation. The pressure, temperature, and flow of water can all be safely regulated throughout the procedure.

Colon hydrotherapy is clean and relaxing.

FDA Intended Use:

Colon Irrigation Systems, are prescription Medical Devices for colon cleansing, such as before radiologic or endoscopic examinations, or when medically indicated.



www.colonic.net

Section One of Two Sections

Room Set Up Instructions

For New Locations - Check with Landlord of recommended Plumbers or Maintenance Personnel that can provide the Plumbing and Electrical Requirements for Room Set Up.

When Landlord has no preference then...

Make copies of Part One Instructions and get at least THREE QUOTES! Beware of those that do not have a business address or want all money up front. The Licensed Plumber will need two Ball valves and any pipes needed to run the Hot and Cold Water lines and Waste Line.

If you need some advice - draw a picture of room and show where plumbing is currently, then Fax or email pictures to us and we will be happy to review with some suggestions. (Graph Page provided Page 13.)

Phone 210 308-8888 For Technical Email: Tomt3rd@colonic.net



EACH LIBBE ROOM WILL NEED -

- Two - Female Ball Valves - 1/2" (12.7mm) Threaded
ONE Hot & ONE Cold Water Line

Do not use substitute Ball valve fittings.

Water Line Hoses, PVC Trap, Five Feet of 2" PVC Pipe, the Clear View Tube, the Odor Control Fan System and other CPVC Fittings are included with LIBBE. (See Page 14. - Packing List)

- **One - G.F.C.I. Wall Outlet**

The Licensed Electrician will need to install:

One Ground Fault Circuit Interrupter, 15 amp.

(To meet United States or International Electrical Codes.)

Note: You will need an additional Electrical Outlet IF you are adding an optional Hot Water Heater under the base.

(Water Heater Installation - Page 22.)

- **You will need**

One - Mirror from Hardware Store or Walmart called a "Door or Closet Mirror" usually about 50 inches Long and comes with a choice of Colored Frames. (Page 29)

A Complete Packing List of PARTS INCLUDED is found on Page 14.

LIBBE TECHNICAL INFORMATION

WHO CAN LEGALLY USE / OPERATE THE LIBBE?

THE LIBBE SHOULD ONLY BE OPERATED BY A LIBBE TRAINED COLON THERAPIST.
MERE READING OF THE "LIBBE USER OPERATION MANUAL" IN NO WAY QUALIFIES
A PERSON OR PERSONS TO USE A LIBBE COLON HYDROTHERAPY SYSTEM!

Training MUST be completed at a LIBBE Recognized School!

LIBBE SYSTEM CLASSIFICATION:

"LIBBE" Colon Hydrotherapy System (Medical Device) & Nozzles, (class II.) are Manufactured in compliance and have met or exceeded the Sanitation, Safety, Plumbing & Electrical Standards required by the USA FDA (Food and Drug Administration), ISO, CE, & EU (European Union), TGA (Australia) Tiller MIND BODY, Inc. as Manufacturer of the LIBBE has completed Licensing for United States, Health Canada, Australia, Europe and others.



LIBBE SYSTEM PRESCRIPTION STATEMENT:

FDA & USA Federal Law restricts a Medical Device to sale by or on the order of a physician or licensed Health care practitioner. This includes all International Countries Medical Device Licensing, operating standards and regulations.

LIBBE SYSTEM POPULATION USE:

FDA (class II) Colonic Irrigation Systems are prescription medical devices and intended for colon cleansing, when medically indicated, such as before radiologic or endoscopic examinations, as identified 21 CF R 876.5220.

LIBBE SYSTEM WEIGHT LIMIT:

Weight limit for the LIBBE System is 500 lbs. / 227 kg.

FOR SERVICE OR TROUBLESHOOTING:

First Review the Quick Reference Guide! If no resolution - The Trained Therapist MUST be in front of System and phone Technical support. **99% of issues are easily handled by phone!**

Official Requests for Copies of our Manufacturing Licenses from FDA (USA Food & Drug Administration), and these International Countries, such as; Health Canada, European Union (EU), Australia (TGA), ISO 13485, CE, AND/OR the MET LABS Electrical Testing must be in writing and include a statement acknowledging documents are proprietary.

ALWAYS CONTACT MANUFACTURER FIRST!

Tiller MIND BODY, Inc. 10911 West Avenue, San Antonio, Texas 78213 USA.

E-mail: info@colonic.net Office: 210 308-8888 Fax 210 349-5679

LIBBE ROOM SET-UP WITH THESE IDEAL CONFIGURATIONS

Ideal room size is 8' x 8' (2.44m x 2.44m) or room may be Larger.

[Rooms smaller than 8' x 8' will be very tight and will prevent Wheel Chair access.]
However a room size 6'6" (2.1m) wide x 8' (2.5m) long, for installation in personal residence will work.

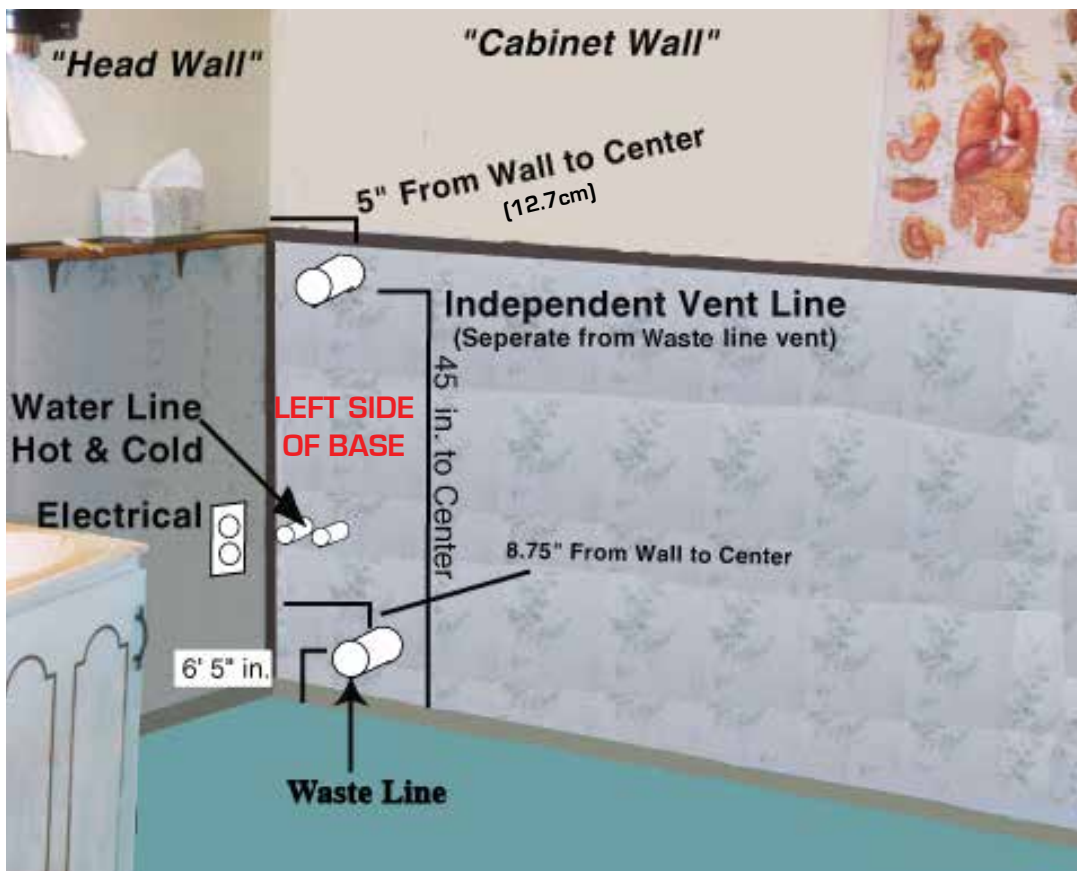
The Wall that LIBBE Base (table) is placed parallel to, (shown here as "Cabinet Wall")
Must be a minimum of 8' (2.44m) wide - This Wall should have no doors or obstructions.

"LIBBE" MUST be Installed with PLUMBING on LEFT SIDE of Device! (Usually in a corner)
(Note: Right side Installation should NOT be considered! - Installing on wrong side will prevent
A safe gravity flow and waste line will not drain properly! You will end up with excessive plumbing costs!)

Important that the center of PVC pipe (Waste Line) is no higher than 6 -1/2" (17cm) above the
Floor and no more than 8 -3/4" (22.2cm) from the corner of the wall.
For proper draining of waste material.

Option 1. Diagram shows The LIBBE Cabinet hangs on the wall shown here as **"Cabinet Wall"**

A dedicated toilet and sink should be nearby, but should **NOT** be in the LIBBE room.
This will delay timing for next scheduled session, as client will be detained and you cannot clean Device.

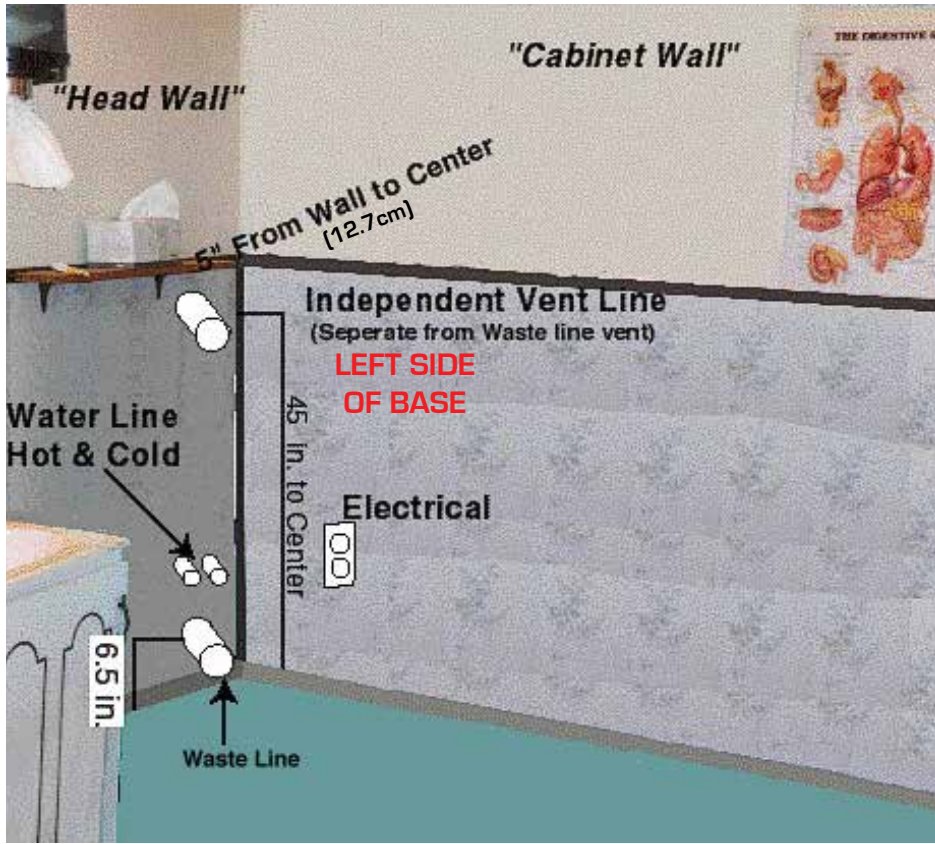


Option 1
Plumbing/Waste Line
Coming through
"Cabinet Wall"

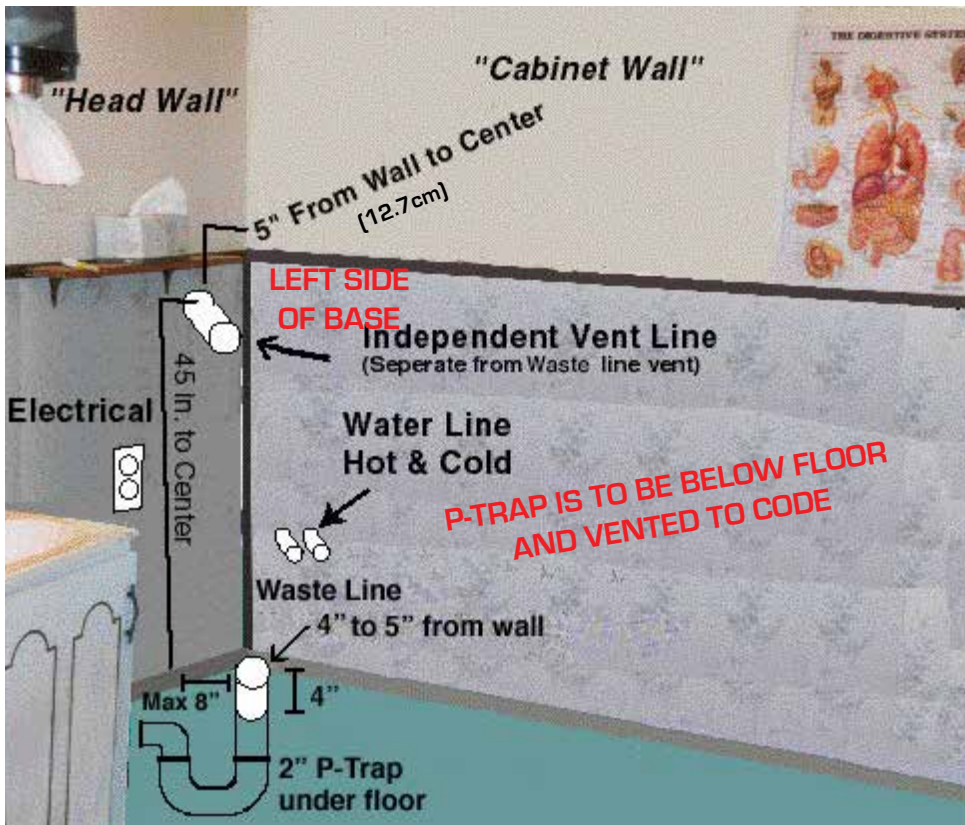
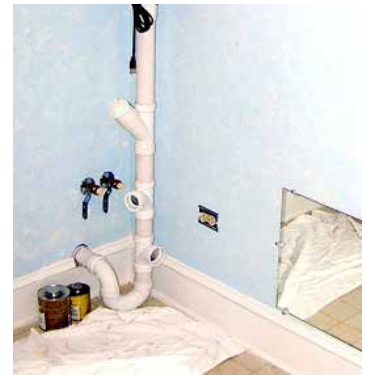


Waste Line
coming
Through
"Cabinet Wall"

LIBBE ROOM SET-UP
ROOM OPTIONS FOR PLUMBING



Option 2
 Plumbing/Waste Line
 Coming through
 "Head Wall"



Option 3
 Plumbing/Waste Line
 Coming through
 "Floor"

LIBBE PLUMBING ROOM SET UP REQUIREMENTS

1 of 3.) WASTE LINE / DRAIN LINE- (Vent as Codes Require)

- The 2" (5.1cm) PVC pipes **(Five Feet of 2" White PVC PIPE is shipped with LIBBE)**
- PVC pipe (waste Line) located NO HIGHER than 6-1/2" (17cm) to center of 2" PVC Pipe from the Floor. (Out of wall near corner, just high enough for P-Trap to fit)
- Leave a minimum of at least 5" (12.7cm) PVC extended through the wall or extending Up from the floor (as from slab or a basement).
- Waste Line must be located close to corner of room. No more than 8 3/4" (23cm) to Center of PVC from corner. - Waste/Drain line vented as Necessary for drainage.

Note: DO NOT Install a P-TRAP Inside Wall or Under Floor. (Prevents Double P-traps.)

P -Trap, Pipe and Fittings shipped with Device, to be connected at time of Installation.



**Waste Line
coming
Through
"Cabinet Wall"**

**LEFT SIDE
OF BASE**



**Waste Line
coming
Through
"Head Wall"**



**Odor Control Fan
Shown here going up
into the ceiling**

2 of 3.) INDEPENDENT VENT PIPE LINE IS DESIGNED TO CONTROL ODOR!

This LINE is separate from the VENT LINE and Runs Independently to the Atmosphere.

Important - Do not attach the Odor Vent Line to the Waste Line, or to any other Vent Lines! An Odor Control Fan System will be attached.

(2" PVC Pipes, P-Trap, Fittings and the Odor Control Fan System is included with LIBBE)

Note: Think of this Odor Vent System similar to a Clothes Dryer Vent.

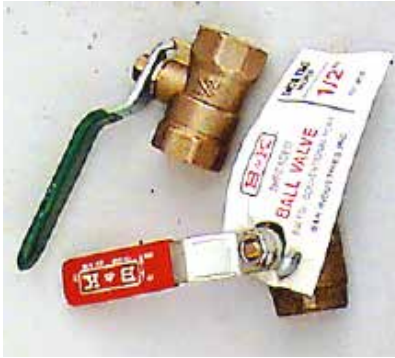
The Odor Vent Pipe should be 45" (1.15m) from the floor and 5" from each corner to the center of the 2" PVC (5.1 cm). The Odor Vent Pipe may be installed inside or outside the wall, leaving a minimum of 5" (12.7cm) PVC extending through the wall inside the room to connect Odor Control Fan as may need to replace in future.

STEP 3. Continued

LIBBE PLUMBING ROOM SET UP REQUIREMENTS Continued...

3 of 3.) One HOT and One COLD Water Supply Lines:

- Two (5.1cm) - Female Ball Valves - 1/2" Threaded (12.7mm) - no higher off the floor than 30" (76.2cm) Below LIBBE independent vent line and close to corner either corner.



**Note: Parts for LIBBE Room will be -
Two - Female Ball Valves - 1/2" (12.7mm) Threaded
ONE Hot & ONE Cold Water Line
Do not use substitute Ball Valves.**

(Ball Valves are not included with LIBBE purchase)

ATTENTION PLUMBERS LIBBE BACK FLOW WATER SAFETY EXCEEDS PLUMBING CODES!

SEE PICTURES PAGE 9. and DRAWING PAGE 12.

- There is a check valve on the LIBBE Base immediately behind the connector nozzle.
- There is a second check valve in-line before the Ultra Violet system in the Cabinet,
- Plus IF any possible Bacteria were to get past TWO Check Valves, it would have to pass thru an Ultra Violet Water Purification System which has a 99.9% safety rating, and even If bacteria were to get thru the UV system, bacteria would then have to pass Upwards through the water column and then Leap upwards more than 1-1/2 inches (5.1cm) (Open Air Gap) into the city water system, go backwards through the pump that only pumps water forward and then jump up into the water holding tank, of which has a 1 inch Open Air Gap and a Anti-siphon "Fluid Master 400" installed!

(ASSE 1002 Code Approved)

- There is also a Watts Anti-Siphon Vacuum Breaker (ASSE 1001) on the View Tube Flusher Line.
- System is designed with several Air Gaps (from 1" to 4" Air Gaps) throughout the System to prevent Back Flow!

Additional Back Flow Prevention Valves are NOT Necessary!

CAUTION!

LIBBE Medical Systems are Manufactured & Tested to meet the required USA and International safety regulations.

Any deviations (changes) from Manufacturer Installation Instructions will become the Responsibility & Liability of the Installer & Owner and Warranty will be Voided

LIBBE AIR GAPS To Meet Plumbing Codes

Manufacturer has designed LIBBE System with several Air Gaps to prevent Back Flow (See Design Drawing on Page 12. #37.)



FLUID MASTER 400 FILL FLOAT VALVE
INSIDE WATER TANK

(Anti Siphon Stands **1+**" above the Overflow Inside Tank)



Connector Nozzle Draining into Base
Where Waste/Water drains
Into Waste Line (**Over 4"** Air Gap)



TANK OVERFLOWS INTO DRAIN LINE
With A minimum of **1-1/2"** AIR GAP
Has a separate P-Trap

PLUMBING PARTS MEET ANSI/ ASME, USA-ASSE, ASTM

Fluid Master Fill Float Valve Inside Tank - EXCEEDS BACK FLOW CODES!
Fluid-master Anti Siphon Valve (400 series) USA-ASSE 1002, Canada-CSA, Meets Mexico, Australia, British, Sweden, Singapore, Hong Kong and others!

Anti-Siphon Valves - Watts Vacuum Breaker:
ASSE 1001, ANSI A112.1.1 Watts LF288A, Canada - CSA B64

Check Valves - CPVC/EPDM 1/2 inch: (Silicone Free)
Type 360, ASTM D-2467, ANSI B1.20.1

GROHE Volume Control Valves - 29-273 Series, ANSI/ASME A112.18.1M,

MOEN - Mixing Valve - Posi-Temp Valve (Pressure Balancing Valve)
ASME A112.10.1M, Canada - CSA B-125

Female Ball Valves - 1/2 inch: (12.7mm) Threaded

PVC - Pipe: plus Fittings, Unions, Couplings etc.
ASTM D1785, ASTM D-2466, ANSI B1.20

CPVC - Pipe plus Fittings, Unions, adapters etc.: ASTM D-1598

Clear View Tube - PVC Pipe with a 90° curve is clear with no coloring

Water Pressure Tests:

Tests conducted for US-FDA and International Agencies by a; TEK METER, Fluke PV350 pressure Transducer module. Water pressure with Flow Control Valve full open: 1.5psi - Maximum flow rate was 2,661.66 milliliters per minute.

A Few of the Testing Symbols are:



Plumbing Inspectors: Should further code clarification be needed,

Please contact our Consultant:

Robert Stricker @ RVS Code Consulting, LLC. Email: rvs1123@gmail.com

Licenses & Certification: M 13186; I 1412; BPAT 0007361; IAPMO Certified 09553
40 yrs construction; 34 yrs Licensed Master Plumber with medical gas & multipurpose Fire Sprinkler Endorsements; 26 years in municipal code inspections; 19 yrs Chief Plumbing Inspector and 4-1/2 yrs as Director of Planning & Development Services.

ELECTRICAL

Room Set up Requirements

Requires **One - G.F.C.I. 15 amp Electrical outlet from your Country installed on Wall!** (110 volt - 60 Hz.) USA standard (110, 115 & 120 volts will work) Pull is less than 2 amps of power! The G.F.C.I. Outlet will be located on either wall within easy access so you can reach in event of re-setting, and within 5' (1.5m) of the corner near the LIBBE plumbing.

Note: If your going to have an optional Hot Water Heater Booster, a CD Player, or Other Electric Item in Room you will need a separate Electrical Outlet. Never plug anything else into the LIBBE System!



⚠ CAUTION: Grounding reliability can only be achieved when this equipment is connected to a matching receptacle and should be checked periodically.
DANGER: To reduce the risk of electrical Shock, **NEVER** open the Electric Control Box (Encapsulated Fiberglass Box). There are No Serviceable parts inside. Warranty will be Voided if Opened! Risk for explosion exists if used in the presence of flammable gases or liquids.

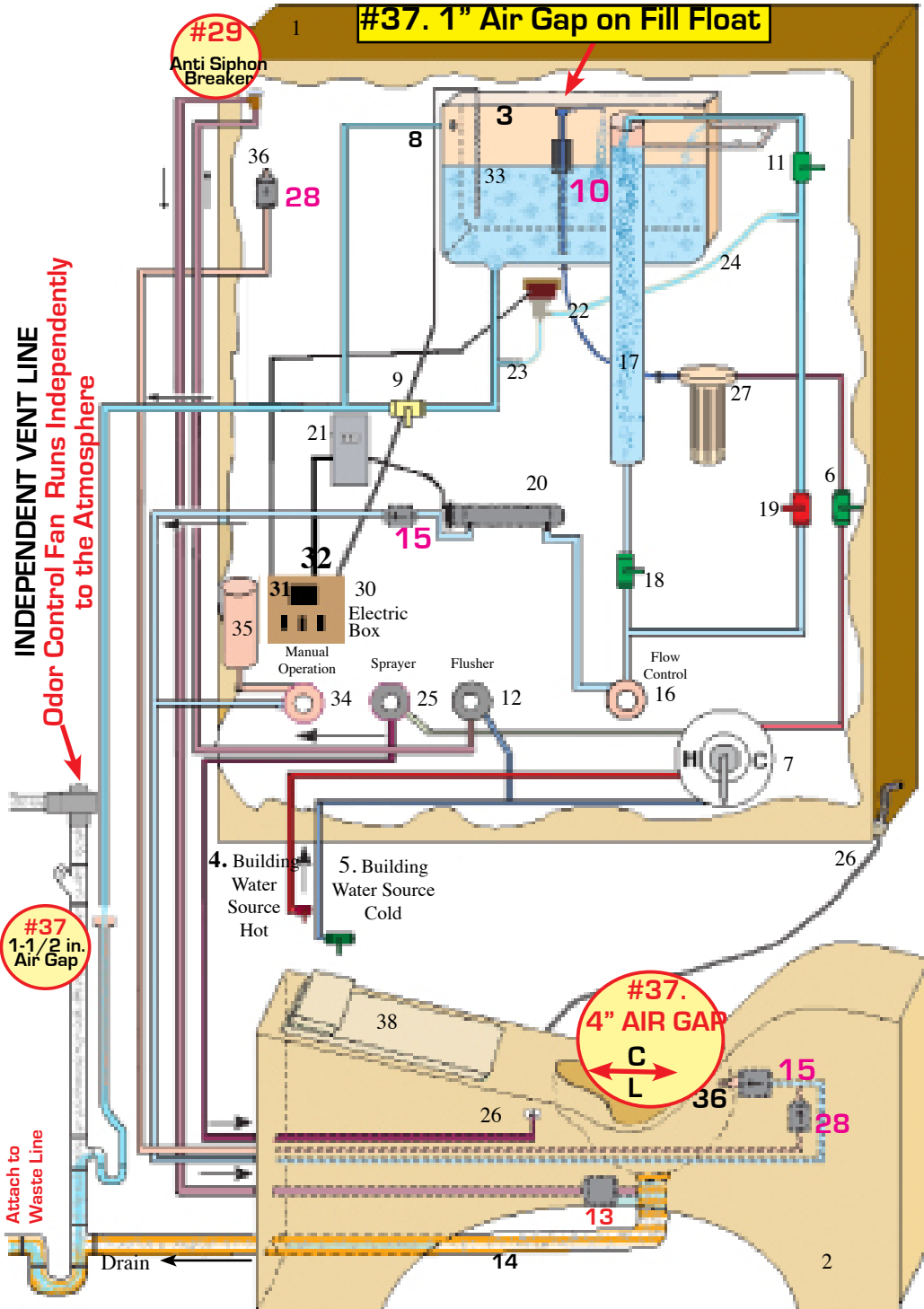
⚠ CAUTION: Do Not operate LIBBE Device in a Condensing Atmosphere.
WARNING: Other Cables and accessories may negatively affect EMC. Portable RF Communications equipment, including antennas, should be used no closer than 12 inches (30 cm) to the LIBBE System.

Electrical Components used are UL Listed

- **G.F.C.I.:** Ground Fault Circuit Interrupter, 15 amp. For United States or International Electrical Codes. **(G.F.C.I. Not included with Device)**
- **LIBBE Electric Control Box on 2015 & Up** (Two 3 amp Fuses) 110 volt - 60Hz. USA., Canada Standard. All Electrical components are **UL** listed & pull less than two amps)110, 115 & 120 volts,50/60Hz.
- **CONTROL Temperature Controller (TC):** Partlow 1160+ 100-240V. 50/60Hz, Normal Operation: 98°F to 102°F The TC Temperature Perimeters must be programmed and calibrated by LIBBE Device Manufacture!
NOTE: Should water temperature go above 104°F (40°C) +2°, the TC shuts off electrical current to pump.
NEVER TAMPER WITH MANUFACTURER PRE-SET TEMPERATURE SETTINGS!
Manufacturer MUST Provide Written Instructions when and how to REMOVE Temperature Controller COVER GUARD
- **PUMP:** For Circulating Water Inside Tank: UL. Recognized under the UL. Component program March Pump 1A-MD-1/2 Mag Drive Pump C.S.A. Approved under File NO. 40072.
- **Odor Control Fan System:** HP; 1/125 V:115CFM @ 0.500 - In SP 23 UL Listed E474179
- **Ultraviolet Water Purification:** Made in Canada, EPA# 57987-CN-00, CE, **Bulb** Rated; 9,000 hours use. To Keep water Purified - Replace Bulb every 12 months. (IF U Instructions in LIBBE Operations Manual)
- **View Tube 16" Light Bar:** Model #UC1011-WHG-16FO-U approx. 36,000 hours. 0.095-watt (152.4cm),
- **Medical Grade Isolation Transformer:** Made in USA, **UL, cUL** (Canada), **IEC/EN** (Europe), ANSI/AAMI

"LIBBE" DESIGN DRAWING

Proprietary Document For Licensed Plumbers
 - to show "AIR GAPS" and why
 Back Flow Preventer's are NOT Necessary.



1. LIBBE Cabinet
2. LIBBE Seat Base (table)
3. LIBBE Water Tank
4. Building Hot Water In - Ball Valve
5. Building Cold Water In - Ball Valve
6. Tank Fill -Valve # 2* (Green)
7. Temperature Selector Lever (Mixer valve)
8. Tank Over Flow
9. Tank Drain -Valve # 5* (Yellow)
10. Fluid Master 400 Fill Float
11. Column Inlet -Valve # 1* (Green)
12. Water Flusher -Knob
13. Water Flusher Jet (In Base)
14. Clear View Tube
15. One-way Check Valves TWO
16. Flow Control -Knob
17. Water Column
18. Water Column -Valve # 4* (Green)
19. Pump Shutoff -Valve # 3* (Red)
20. Ultraviolet Water Purifier
21. UV Controller Ballast
22. Water Pump
23. Pump Suction Line
24. Pump Discharge Line
25. Water Sprayer -Knob
26. Sprayer Hose Assembly and head
27. Filter System
28. Oxygen Line check valves TWO
29. Anti-Siphon (Vacuum Breaker)
30. Electric Box (Switch Control Panel)
31. Temperature Controller (TC)
32. Temperature Controller Display
33. Temperature Probe
34. Manual Operations - Knob
35. Manual Water Column
36. Connector Nozzle
37. Air Gaps (Meets Code)
38. Back & Headrest Cushion

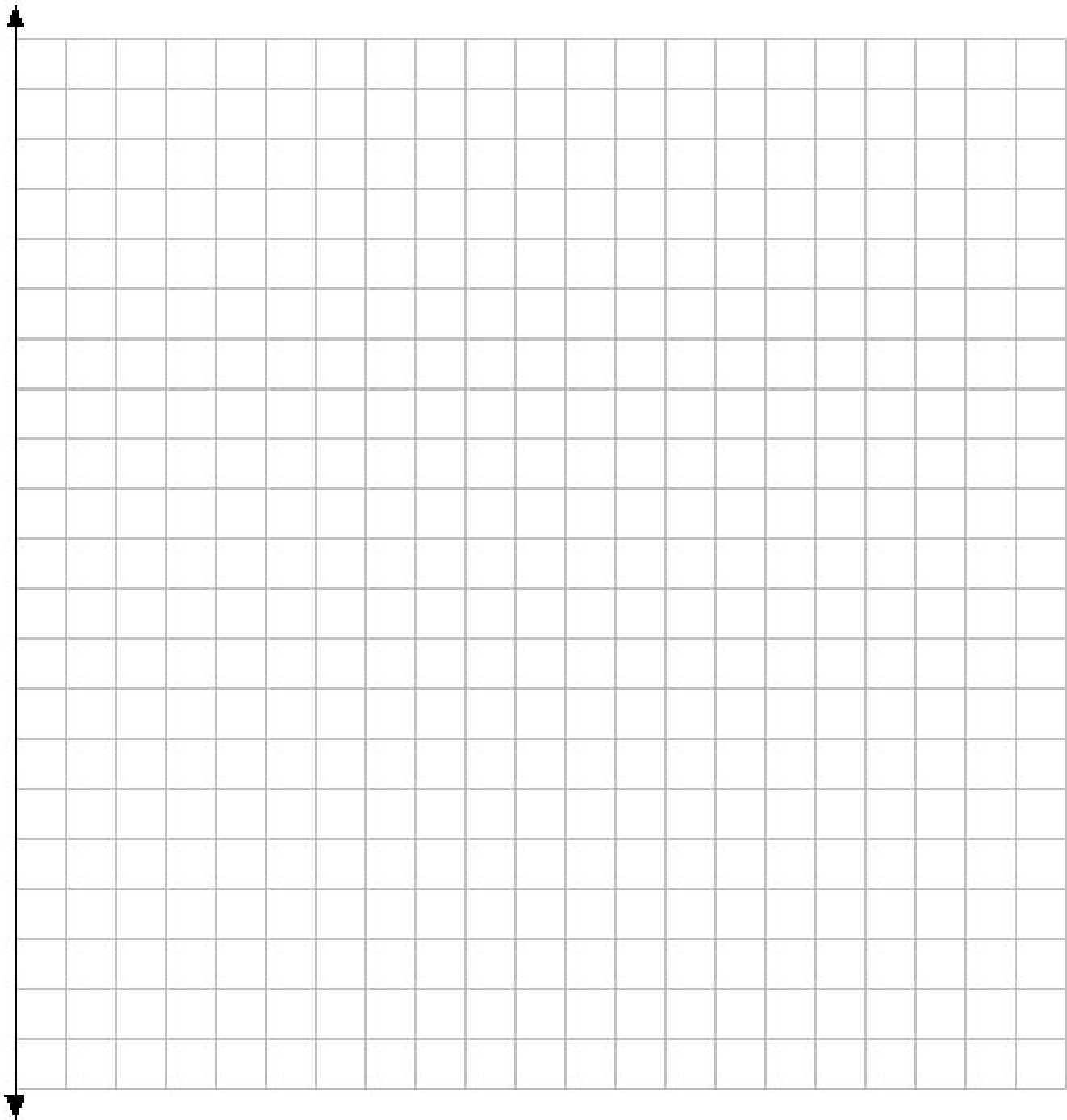
For Water Quality and Safety:
 The LIBBE is designed to prevent water flow from going backwards.
 Refer to diagram numbers below:
37 - Air Gaps [Per Code]
15 - One-way check valves [2 places]
29 - Anti-siphon Vacuum Breaker
10 - Fluid Master 400 Fill Float

© Copyright Material,1994 -
 Revised - 08/2015
 Tiller MIND BODY, Inc.
 210 308-8888
 www.colonic.net

MA-DRW-0002 REV 6

Name: _____

Drawing a Line Graph



**USE TO DRAW OUT
SIZE OF ROOM, DOORS or WINDOWS
PLUMBING / WASTE Lines**

Fax 210 349-5679 OR scan/email: tomt3rd@colonic.net

LIBBE CRATE PACKING LIST

ALL ITEMS ARE CHECKED OFF "TWICE" BEFORE CAREFULLY PACKED INSIDE SHIPPING CRATE

- LIBBE Serial #** _____ (Supplies are checked off on Invoice!)
- LIBBE Cabinet style: Wood Maple _____ Fiberglass _____ Refurb _____
- Temperature Control (TC) Programmed: **Fahrenheit** _____ **Celsius** _____
- _____ LIBBE Fiberglass Base AND _____ LIBBE Base Lid
- _____ One - Set of Cushions (2Pc) In Clear Plastic Bags
- _____ One - Cabinet Cleat Wood (To Hang Cabinet on Wall)
- _____ One - Clear View Tube Setup (and One Compression Coupling)
- _____ One - View Tube Light

Customer: _____

DATE: _____

SHIPPING Department:

Supplies By: _____

Packed By: _____

- _____ Mark Serial # on TC
- _____ Mark Serial # Cabinet
- _____ Test Check Valve/Base
- _____ Cleat Label on CLEAT
- _____ All LABELS on CRATE

SAMPLE

IN SMALL BOX TOGETHER (Labeled with Contents)

- | | |
|-----------------------------------|--|
| _____ One - U.V. Light Bulb | _____ One - LIBBE OPERATION NOTEBOOK |
| _____ One - Filter Wrench Tool | _____ - LIBBE Plumbing Installation Instructions |
| _____ One - Plastic Handle Mop | _____ - LIBBE Quick Reference Guide |
| _____ One - Mop on a Rope (Snake) | _____ - MSDS (Material Safety Data Sheet) |
| | _____ - SOP (Standard Operating Procedure) |

IN SMALL (10X8X6) BOX TOGETHER (Labeled with Contents)

- | | |
|---|--------------------------------|
| _____ One - Blower Motor Setup (Odor Control) | _____ One - Silicone Tube |
| _____ One - Set of Screws to Install the Cabinet Cleat (wood) | _____ One - PVC Glue |
| _____ One - Sprayer Hose Hook (Install on Side of Cabinet) | _____ Two - 3/4" 90 Elbow |
| | _____ Two - 1/2" Threaded Male |

LIBBE PLUMBING CONNECTIONS/PVC & CPVC Fittings inside a Plastic Bag

- | | | |
|-----------------------------|-------------------------------|------------------------------|
| _____ Two - Sanitary Tee | _____ One - 3" to 1 1/2" | <u>PVC PIPE inside Crate</u> |
| _____ One - 45 Sanitary Tee | _____ One - 2" Short 90 Elbow | _____ ONE - 2" (5' LONG) |
| _____ One - Clean Out Plug | _____ One - 2" P-Trap | _____ ONE - 1 1/2" (2' LONG) |
| _____ One - 2" to 1 1/2" | _____ One - 1 1/2" P-Trap | _____ ONE - 3/4" (2' LONG) |

4



PHYTOSANITARY DECLARATION

All Wood Materials used in System or Crate
Construction meet the IS-PM
#15 Regulations.

All wood panel components have been
Manufactured from Canadian or European
Plywood and is exempt from regulation,
According to IS-PM #15.

Crate Manufacturer is an I.P.P.C.
Certified Manufacturer and approved for Export.

Number CA-00009

CRATE SIZE: 66" (168cm) Long X 54" (127cm) High X 34" (86.4cm) wide
WEIGHT: 400 to 500 Pd's. (182 to 227kg) Depending on Amount of Supplies