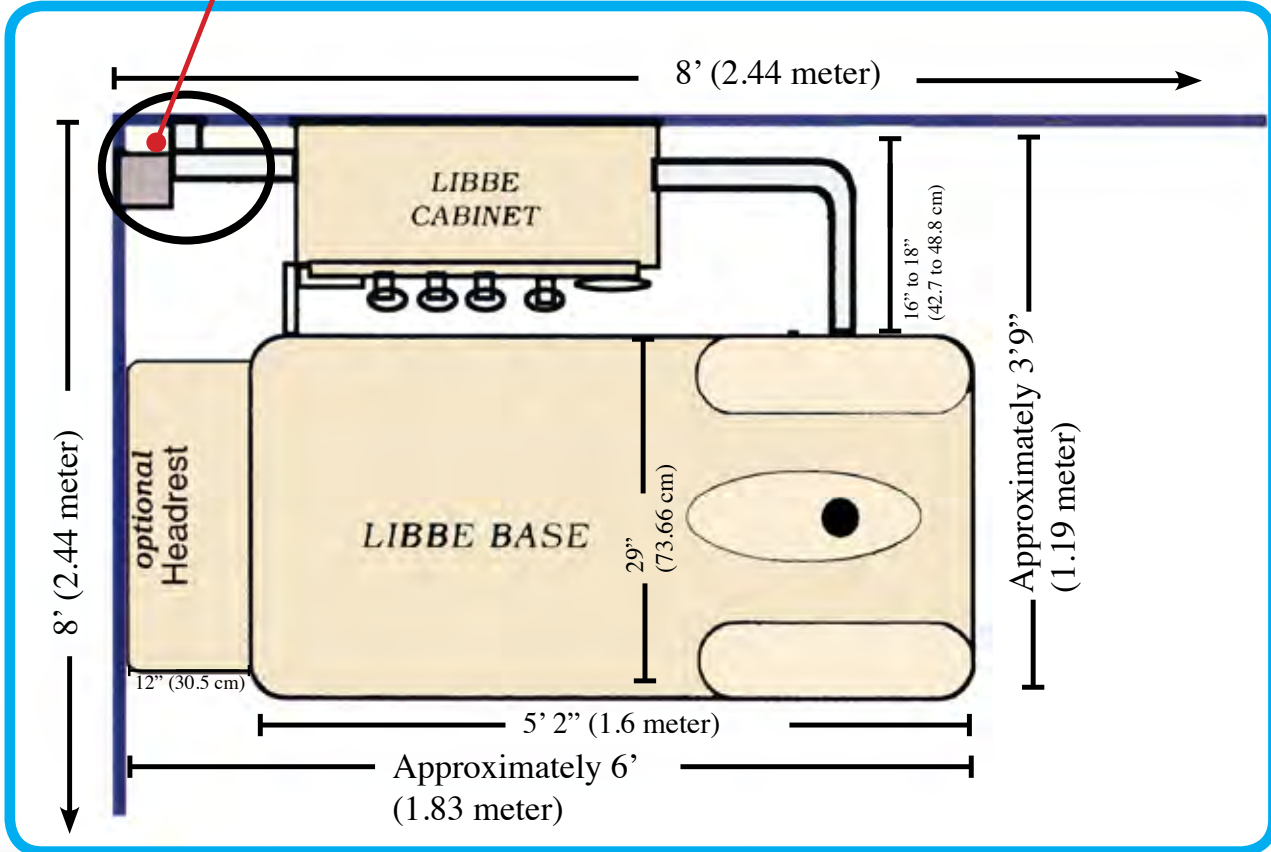




LIBBE Room Set Up & Plumbing Guidelines



In Corner of Room: Rough Plumbing Connections include: Hot & Cold Water Supply, Sewer line, Independent Vent Line and G.F.C.I. Electrical Outlet - All on Left side & Corner of where Device is placed.



Plumbing Instructions



Manufactured By:

Tiller MIND BODY Inc.
10911 West Avenue
San Antonio, Texas 78213
210 308-8888
Fax 210 349-5679

www.colonic.net

Worldwide since 1995

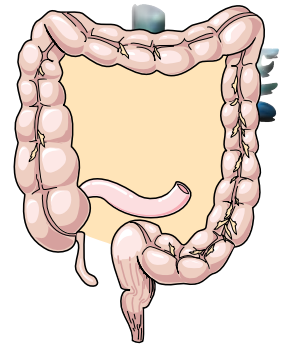
**Installation Instructions
For Devices Built from
2002 through End of 2014.**

**Not Sufficient for Devices
Built 2015 and After!**

MA-DRW-1409-0016 Rev 13



LIBBE



FDA Registered COLON HYDROTHERAPY MEDICAL DEVICE



The LIBBE

**An alternative treatment for
Constipation before
Colonoscopy and other
Endoscopic Exams!**

WHAT IS Colon Hydrotherapy?

Colon hydrotherapy is referred to as Colonics, colon irrigation, or high enemas. All of these are names for colon hydrotherapy which uses water for inner cleansing of the Large Intestine.

A soothing flow of filtered, ultra violet purified warm water is instilled gently into the colon through a disposable colonic nozzle inserted into the rectum to cleanse (evacuate) the contents of the lower colon.

The system is designed to allow evacuation of the contents of the colon during the administration of the colonic irrigation. The pressure, temperature, and flow of water can all be safely regulated throughout the procedure.

Colon hydrotherapy is clean and relaxing.

Intended Use:

Use of the LIBBE Device is for colon cleansing when medically indicated, such as; Constipation or before endoscopic examinations.

For Therapist in your Area:

www.colonic.net

FDA U.S. Food and Drug Administration
Class II Medical Device - Since 1995
Quality System FDA 21 CFR Part 820

United States
Australia
Canada
Europe
Hong Kong
Mexico
Others

Made In USA



Rx

Required for
Device/Nozzle
Purchase



LIBBE TECHNICAL INFORMATION



WHO CAN LEGALLY USE / OPERATE THE LIBBE?

THE LIBBE SHOULD ONLY BE OPERATED BY A LIBBE TRAINED COLON THERAPIST.
MERE READING OF THE "LIBBE USER OPERATION MANUAL" IN NO WAY QUALIFIES
A PERSON OR PERSONS TO USE A LIBBE COLON HYDROTHERAPY DEVICE !

Device Training MUST be completed at a LIBBE Recognized School!

LIBBE CLASSIFICATION:

"LIBBE" Colon Hydrotherapy Medical Equipment & Nozzles, (class II.) are Manufactured in compliance and have met or exceeded the Sanitation, Safety, Plumbing & Electrical Standards required by the USA FDA (Food and Drug Administration), ISO, CE, & EU (European Union), TGA (Australia) Tiller MIND BODY, Inc. as Manufacturer of the LIBBE has completed Licensing for United States, Health Canada, Australia, Europe, Hong Kong, Mexico, others. (China is pending.)

LIBBE PRESCRIPTION STATEMENT:

FDA & USA Federal Law restricts a Medical Device to sale by or on the order of a physician or licensed Health care practitioner. This includes all International Countries Medical Device Licensing, operating standards and regulations.

LIBBE POPULATION USE:

The LIBBE Device is for those clients/patients in need of colon hydrotherapy such as before radiological or endoscopic examinations; i.e.: Colonoscopy or when medically indicated.

LIBBE WEIGHT LIMIT:

Weight limit for the LIBBE Device is 500 lbs. / 227 kg.

FOR SERVICE OR TROUBLESHOOTING:

First Review the Quick Reference Guide! If no resolution - The Trained Therapist MUST be in front of Device and phone Technical support. 99% of issues are handled by phone!

Official Requests for Copies of our Medical Device Licenses from FDA (USA Food & Drug Administration), and these International Countries, such as; Health Canada, European Union (EU), Australia (TGA), Mexico, Hong Kong, ISO 13485, CE, AND/OR the MET LABS Electrical Testing must be in writing and include a statement acknowledging documents are proprietary.

ALWAYS CONTACT MANUFACTURER FIRST!

Tiller MIND BODY, Inc. 10911 West Avenue, San Antonio, Texas 78213 USA.
e-mail: info@colonic.net Office: 210 308-8888 Fax 210 349-5679



***LIBBEs Built 2002 through 2014**



Part One of Two Parts Room Set Up Instructions

For New Locations - Check with Landlord of recommended Plumbers or Maintenance Personnel that can provide the Plumbing and Electrical Requirements for Room Set Up.

When Landlord has no preference then...

Make copies of Part One Instructions and get at least three quotes. Beware of those that do not have a business address or want all money up front. The Plumber will need Ball valves and any pipes needed to run water lines and sewer.

If you need some advice - draw a picture of room and where plumbing is currently, then Fax or email pictures to us and we will be happy to review with some suggestions. [Graph Page provided Page 13.]

Phone 210 308-8888 Fax 210 349-5679 Email: Tom@colonic.net



EACH LIBBE ROOM WILL NEED -

- **Two - Female Ball Valves - 1/2" (12.7mm) Threaded ONE Hot & ONE Cold Water Line**
Do not use substitute Ball valve fittings.
- **One - G.F.C.I. Wall Outlet**
(Ground Fault Circuit Interrupter, 15 amp. For United States or International Electrical Codes.)
- **One - Mirror from Hardware Store or Walmart called a "Door or Closet Mirror" usually about 50 inches Long and comes with a choice of Colored Frames.**

Packing List of Operations Manual, Plumbing Instructions, Odor Control Fan, UV Bulb, PVC Pipes & Fittings for LIBBE Plumbing Stack, etc; that are included and shipped with LIBBE Device. **Page 11.**



LIBBE ROOM SET-UP WITH THESE IDEAL CONFIGURATIONS



Ideal room size is 8' x 8' (2.44m x 2.44m) or room may be Larger.

[Rooms smaller than 8' x 8' will be very tight and will prevent Wheel Chair access.]
However a room size 6'6" (2.1m) wide x 8' (2.5m) long, for installation in personal residence will work.

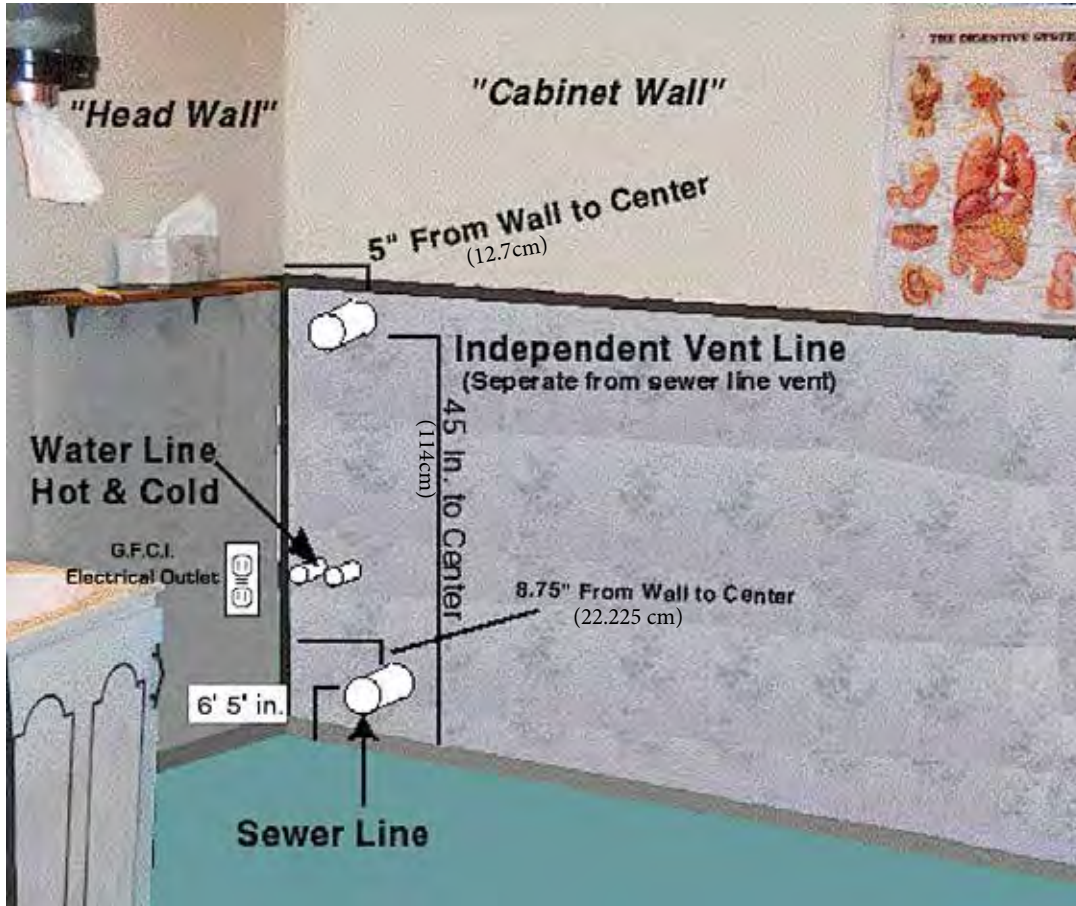
The Wall that LIBBE Base [table] is placed parallel to, [shown here as "Cabinet Wall"]
Must be a minimum of 8' (2.44m) wide - This Wall should have no doors or obstructions.

"LIBBE" MUST be Installed with PLUMBING on LEFT SIDE of Device! [Usually in a corner]
[Note: Right side Installation should NOT be considered - Testing showed installing on wrong side will Prevent a safe gravity flow and will not drain properly! You will end up with excessive plumbing costs!]

Important that the center of PVC sewer pipe is no higher than 6 -1/2" (17cm) above the
Floor and no more than 8 -3/4" (22.2cm) from the corner of the wall.
For proper draining of waste material.

Option 1. Diagram shows The LIBBE Cabinet hangs on the wall shown here as **"Cabinet Wall"**

A dedicated toilet and sink should be nearby, but should NOT be in the LIBBE room.
This will delay timing for next scheduled session, as client will be detained and you cannot clean Device.



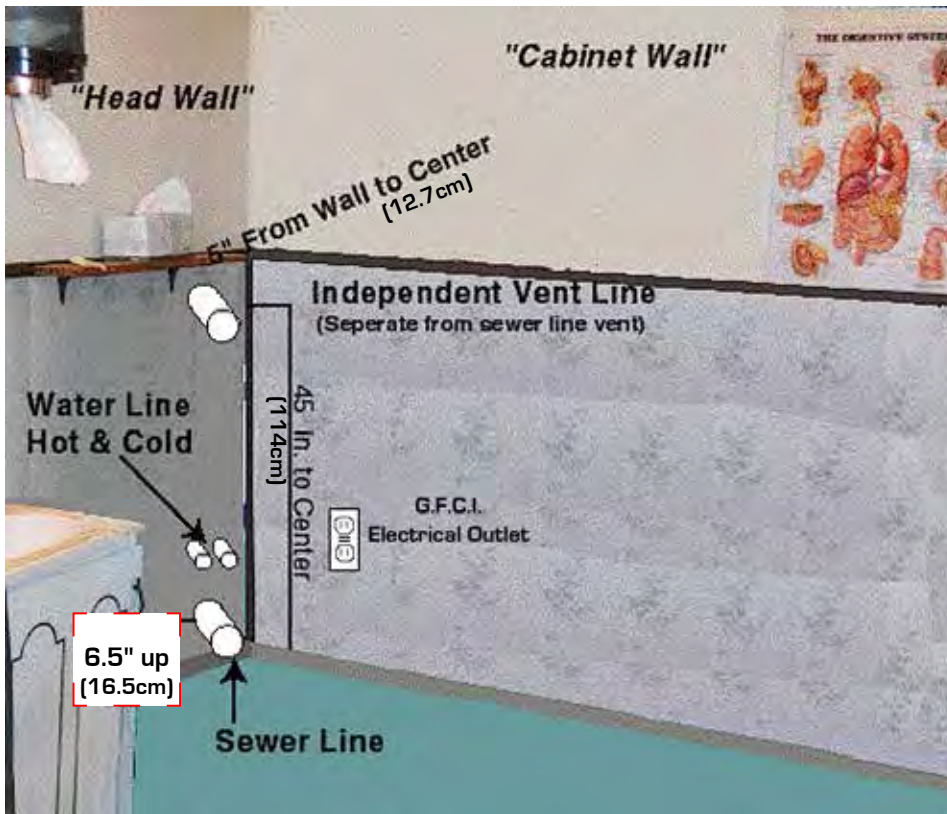
Option 1 Plumbing/Sewer Coming thru "Cabinet Wall"

Room Set-Up
Options show a
Sink in room...

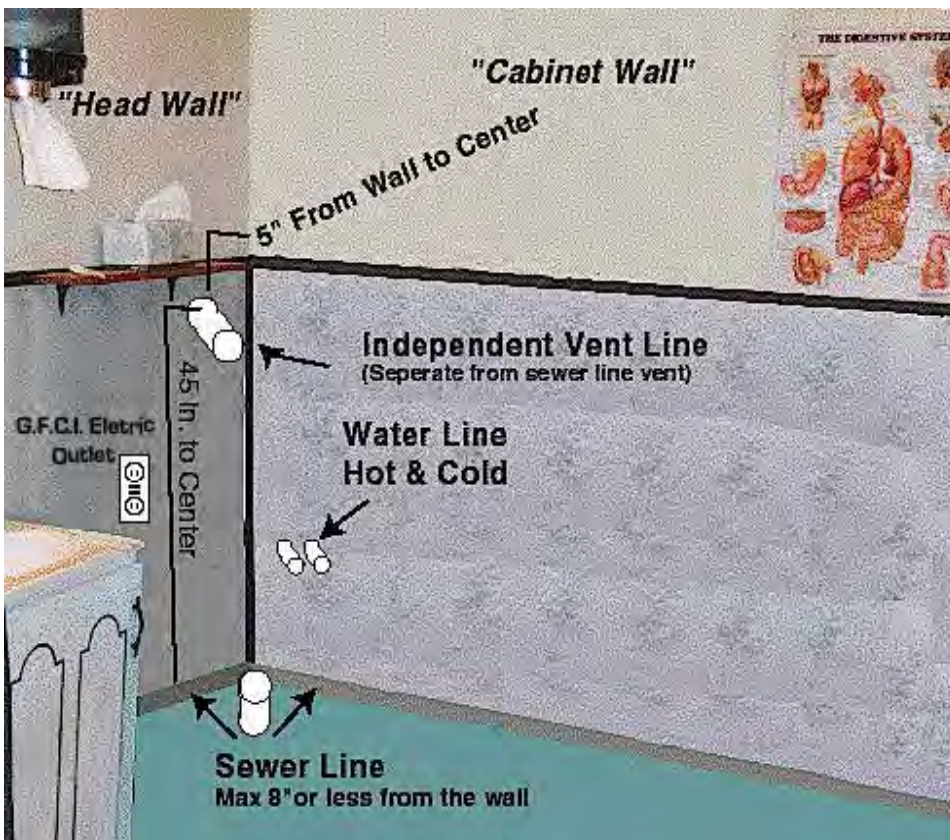
Best To Not have
a Toilet or Sink in
the Session Room.



LIBBE ROOM SET-UP ROOM OPTIONS FOR PLUMBING



Option 2
Plumbing/Sewer
Coming thru
"Head Wall"



Option 3
Plumbing/Sewer
Coming
"Thru Floor"





LIBBE PLUMBING ROOM SET UP REQUIREMENTS



1 of 3.) SEWER LINE / DRAIN LINE- (Vent as Codes Require)

- The 2" (5.1cm) PVC pipes **(Five Feet of 2" White PVC PIPE is shipped with LIBBE)**
- The Sewer PVC pipe will be located NO HIGHER than 6-1/2" (17cm) to center of 2" PVC Pipe from the Floor. (Out of wall near corner, just high enough for P-Trap to fit)
- Leave a minimum of at least 5" (12.7cm) PVC extended through the wall or extending Up from the floor (as from slab or a basement).
- Sewer Line must be located close to corner of room. No more than 8 3/4" (23cm) to Center of PVC from corner. - Sewer line vented as Necessary for drainage.

Note: DO NOT Install a P-TRAP Inside Wall or Under Floor. (Prevents Double P-traps.)
P-Trap, and Fittings shipped with Device, to be connected at time of Installation.



Sewer coming thru
"Cabinet Wall"



Sewer coming thru
"Head Wall"



Sewer coming thru
"Thru Floor"

Less Than
10 Gallons
of water
Per Session

2 of 3.) INDEPENDENT ODOR VENT PIPE LINE IS DESIGNED TO CONTROL ODOR!

The ODOR VENT LINE is separate from the Sewer VENT LINE!

Important - Do not attach the Odor Vent Line to Sewer Line, or to any other Odor Vent Lines!
Must have One Odor Vent Line Per LIBBE An Odor Control Fan System will be attached.

(2" PVC Pipes and the Odor Control Fan System is included with LIBBE)

Note: Think of this Odor Vent System similar to a Clothes Dryer Vent.

The Odor Vent Pipe should be 45" (1.15m) from the floor and 5" from each corner to the center of the 2" PVC (5.1 cm). The Odor Vent Pipe may be installed inside or outside the wall, leaving a minimum of 5" (12.7cm) PVC extending through the wall inside the room to connect Odor Control Fan later.

STEP 3. Continued



LIBBE PLUMBING ROOM SET UP REQUIREMENTS Continued...



3 of 3.) One **HOT** and One **COLD** Water Supply Lines:

- Two (5.1cm) - Female Ball Valves - 1/2" Threaded (12.7mm) - no higher off the floor than 30" (76.2cm) Below LIBBE independent vent line and close to corner either corner.



**Note: Parts for LIBBE Room will be -
Two - Female Ball Valves - 1/2" (12.7mm) Threaded
ONE Hot & ONE Cold Water Line
Do not use substitute Ball Valves.**

(Ball Valves are not included with purchase)

ATTENTION PLUMBERS LIBBE BACK FLOW WATER SAFETY EXCEEDS PLUMBING REQUIREMENTS!

- There is a check valve on the LIBBE Base immediately behind the connector nozzle.
- There is a second check valve in-line before the Ultra Violet system in the Cabinet,
- Plus IF any possible Bacteria were to get past TWO Check Valves, it would have to pass thru an Ultra Violet Water Purification System which has a 99.9% safety rating, and even if bacteria were to get thru the UV system, Bacteria would then have to pass upwards through the water column and then Leap upwards more than 2 open inches (5.1cm) into the city water system, go backwards through the pump that only pumps water forward and then jump up into the water holding tank, of which has a Anti-siphon "Fluid Master 400" Fill Float Valve! (Code Approved)
- There is also a Watts Anti-Siphon Vacuum Breaker on the View Tube Flusher Line.
- Plus there are other Air Gaps throughout the LIBBE Cabinet and Base!
Back Flow Prevention Valves are NOT Necessary!

State of Massachusetts Special Plumbing Installation Requirements:

Materials shall comply with Massachusetts Commercial Plumbing Regulations.

Shall install Reduce Pressure Back Flow Prevention Devices for Hot and Cold Water Lines.



PLUMBING PARTS MEET ANSI/ ASME, USA-ASSE, ASTM



Female Ball Valves - 1/2 inch: (12.7mm) Threaded

Check Valves - CPVC/EPDM 1/2 inch: (Silicone Free)
Type 360, ASTM D-2467, ANSI B1.20.1

Anti-Siphon Valves - Vacuum Breakers:
ASSE 1001, ANSI A112.1.1 Watts LF288A, Canada - CSA B64

Fill Float Valve Inside Tank - EXCEEDS BACK FLOW CODES!
Fluid master Anti Siphon Fill Valve (400 series) USA-ASSE 1002, Canada-CA SA,
Meets Mexico, Australia, British, Sweden, Singapore, Hong Kong and others!

GROHE Volume Control Valves - 29-273 Series, ANSI/ASME A112.18.1M,

MOEN - Mixing Valve - Posi-Temp Valve (Pressure Balancing Valve)
ASME A112.10.1M, Canada - CSA B-125

PVC - Pipe: plus Fittings, Unions, Couplings etc.
ASTM D1785, ASTM D-2466, ANSI B1.20

CPVC - Pipe plus Fittings, Unions, adapters etc.: ASTM D-1598

Clear View Tube - PVC Pipe is Clear with no coloring

Water Pressure Tests:

Tests conducted for FDA by TEKMETER, Fluke PV350 pressure transducer module.
Water pressure with Flow Control Valve full open: 1.5psi - Maximum flow rate was
2,661.66 milliliters per minute.

Symbols of Parts used are:





ELECTRICAL Room Set up Requirements



ELECTRICAL All components are UL Listed

Electrical outlet from your Country installed on Wall!

(110 volt - 60 Hz.) USA standard (110, 115 & 120 volts will work)

Pull is less than 2 amps of power! The Outlet will be located on either wall within easy reach in event and within 5' (1.5m) of the corner near the LIBBE plumbing.

- Ideally, it will be located within two feet (61cm) of the corner near the plumbing
- Electrical outlet may be located on either wall.

(International Countries may require converting to 110 - 120 volts 50/60 Hz.)

Note: If your going to have an optional Hot Water Heater Booster, a CD Player, an Electric aroma therapy unit or any other accesory in Room you will need a separate Electrical Outlet.

Installer: Please ask them before you start....

LIBBE Electrical Components are UL Listed

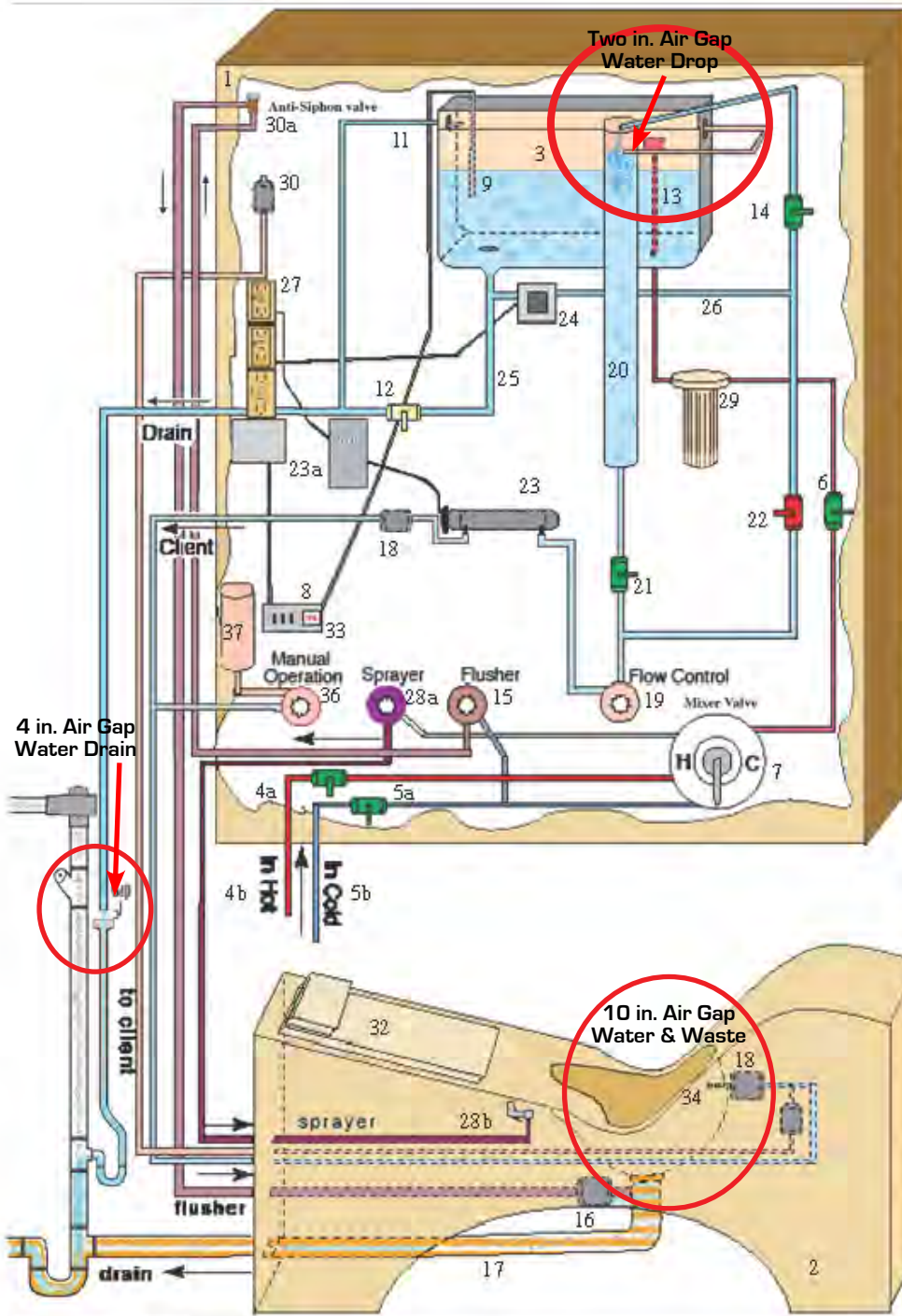
- **G.F.C.I.:** Ground Fault Circuit Interrupter, 15 amp. For United States or International Electrical Codes.
(G.F.C.I. not included with Device)
- **CONTROL Temperature Controller (TC):** Partlow 1160+ 100-240V. 50/60Hz, Normal Operation: 98°F to 102°F
The TC Temperature Perimeters must be determined and calibrated by LIBBE Device Manufacture!
NOTE: Should water temperature go above 104°F (40°C) +2°, the TC shuts off electrical current to pump.
- **PUMP:** For Circulating Water Inside Tank U.L. Recognized under the U.L. Component program
March Pump 1A-MD-1/2 Mag Drive Pump C.S.A. Approved under File NO. 40072.
- **Odor Control Fan System** - HP; 1/125 V:115CFM @ 0.500 - In SP 23 UL Listed E474179
- **Ultraviolet Water Purification:** Made in Canada, EPA# 57987-CN-00, CE, **Bulb** Rated; 9,000 hours use.
To Keep water Purified - Replace Bulb every 12 months. (IFU Instructions in LIBBE Operations Manual)
- **View Tube 16" Light Bar:** Model #UC1011-WHG-16FO-U approx. 36,000 hours. 0.095-watt (152.4cm),

⚠ CAUTION: Do Not operate LIBBE Device in a Condensing Atmosphere.

Devices Built from 2002 through 2014

"LIBBE" DESIGN DRAWING

Proprietary Document For Plumbing Inspectors
 Drawing Shows "AIR GAPS" making
 Back Flow Preventor's NOT Necessary!

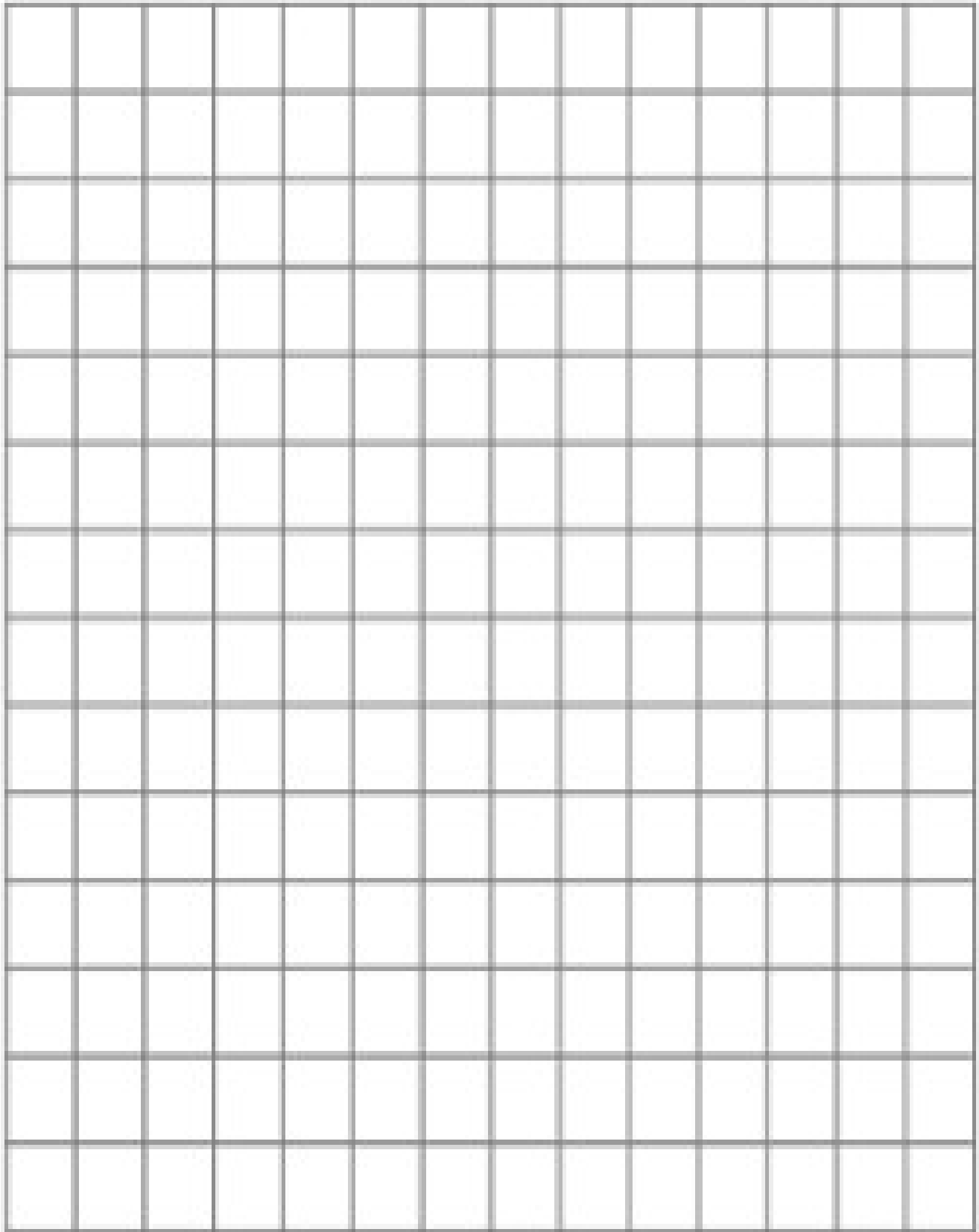


1. LIBBE Wall Cabinet
2. LIBBE Seat Base (table)
3. LIBBE Water Tank
- 4a. Hot Water In - Valve # 6 (Grn)
- 4b. Hot Water In
- 5a. Cold Water In - Valve # 7 (Grn)
- 5b. Cold Water In
6. Tank Fill - Valve # 2 (Grn)
7. Temperature Selector Lever (mixer valve)
8. Temperature Controller Sensor
9. Temp. Sensor Probe
10. Time Indicator (clock) (not shown)
11. Tank Over Flow
12. Tank Drain - Valve # 5 (Yell)
13. Tank Fill - Float Valve
14. Column Inlet - Valve # 1 ((Grn)
15. Water Flusher - Knob
16. Water Flusher Jet
17. Clear View Tube
18. One-way Check Valves
19. Flow Control - Knob
20. Water Column
21. Water Column - Valve # 4 (Grn)
22. Pump Shutoff - Valve # 3 (Red)
23. Ultraviolet Water Purifier
- 23a. UV Controller
24. Pump
25. Pump Suction Line
26. Pump Discharge Line
27. Electrical Receptacles (GFCI)
- 28a. Water Sprayer - Knob
- 28b. Sprayer Hose Assembly
29. Filter
30. Oxygen Injector check valves
- 30a. Anti Siphon Valve - (Vacuum Breaker)
31. Mirror (not shown)
32. Back & Headrest Cushion
33. Switch Control Panel
34. Flexible Tubing Connector
35. Fluorescent Light (not shown)
36. Manual Operations - Knob
37. Manual Water Column
38. LIBBE Flexible Tubing (not shown)
39. LIBBE Nozzles and/or Rectal Tubes (not shown)

© Copyright Material, 1994
 Revised - 10/2008
 Tiller MIND BODY, Inc.
 www.colcnic.net

MD-DRW-0810-0002 REV 2

**USE TO DRAW OUT
SIZE OF ROOM, DOORS or WINDOWS, PLUMBING, LIBBE Device**





After Initial Plumbing Completed, LIBBE May Then Be Connected by Customer or Installer!



Manufactured By:

Tiller MIND BODY Inc.

10911 West Avenue

San Antonio, Texas 78213

210 308-8888

Fax 210 349-5679

Worldwide since 1995

**Installation Instructions
For Devices Built from
2002 through End of 2014.**

**REQUEST A HARD COPY
Too Large to Email!**



**Install LIBBE
Instructions**

Do not use a LIBBE in condensing Atmosphere.