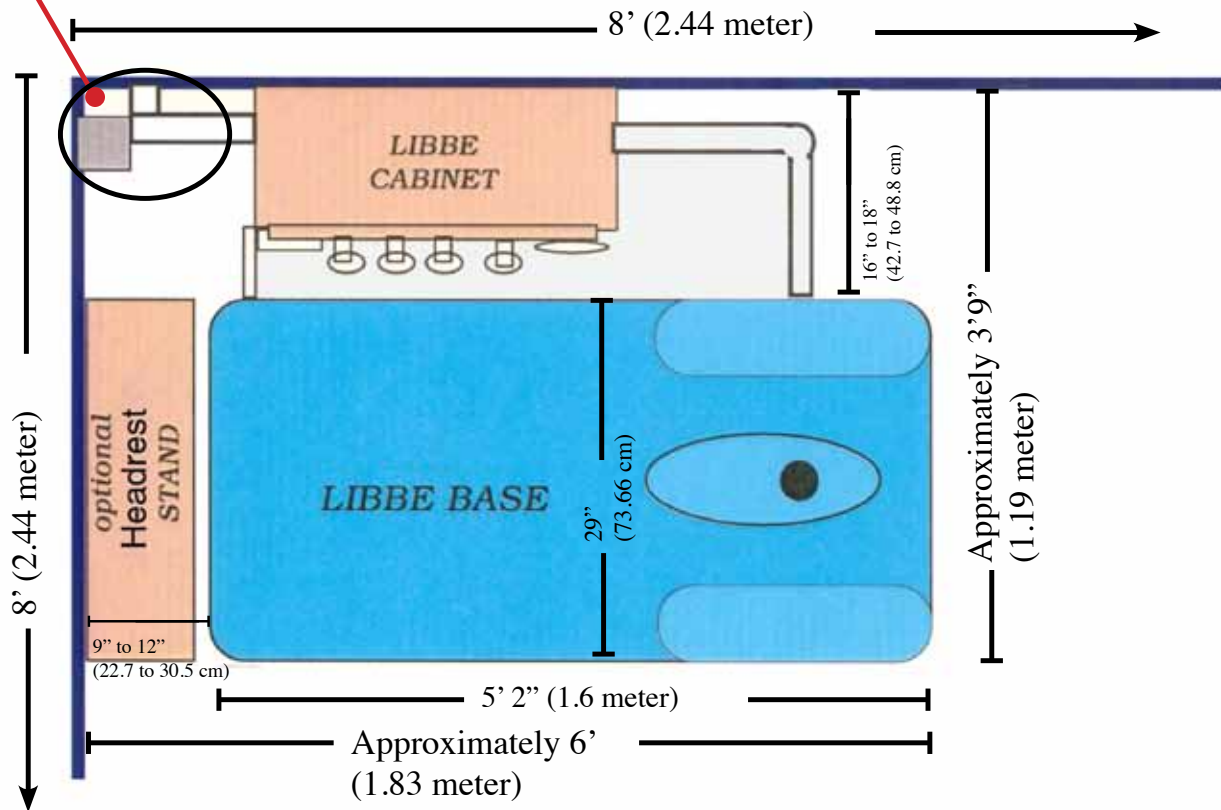


LIBBE BASIC INSTRUCTIONS & MEASUREMENTS

In Corner of Room:

Rough Plumbing Connections (Hot & Cold Sewer line, Independent Vent Line and Electrical Outlet)



Equipment Manufactured By: Tiller MIND BODY Inc.

10911 West Avenue
San Antonio, Texas 78213
210 308-8888
Fax 210 349-5679
email: info@colonic.net

www.colonic.net

FDA U.S. Food and Drug Administration
Class II Medical Device - Since 1995
Quality System FDA 21 CFR Part 820

ISO 13485: 2003

CE 0459

United States
Australia
Health Canada
European Union
Others

Rx

Required for
Device/Nozzle
Purchase

EC REP

Emergo Europe
Malentsraat 15
2513 BH, The Hague
The Netherlands

EMERGO CANADA
1275 West 6th Ave,
Vancouver, BC Canada

EMERGO AUSTRALIA
Level 20, Tower II, Darling Park
201 Sussex Street
Sydney, NSW 2000 Australia

**CALL or EMAIL A REQUEST - WE WILL MAIL THE
20 Page PLUMBING AND INSTALLATION INSTRUCTIONS!
THIS IS NOT COMPLETE INSTRUCTIONS!
(Many Pictures - too large to Email!)**

LIBBE Technical Information



Electrical: 110 volt - 60Hz. USA., Canada Standard (All are UL & pull less than two amps)
110, 115 & 120 volts, 50/60Hz. - May require Using a Converter EU, ASIA (*pulls 1.5 amps.*)

Water Lines: One Hot and One Cold; Use Two Female Ball Valves - 1/2" (12.7mm) Threaded
(approximately twenty gallons/75.708236 liters of tempered water are used for a 45 minute session.)

Water Flow Supply Rate: Gravity Fed System; Water pressure full open: 1.5 psi.
(Approximately 30 oz. Per column fill) Maximum flow rate 2,661.66 milliliters per minute.

Water Back Flow Safety Information: Each LIBBE has a anti-siphon "FluidMaster 400" Float Valve
inside Water Tank which provides air-gap water safety requirements - Code approved, eliminates
contamination of fresh water supply - Corrosive resistant. USA-AS SE 1002, Canada-C SA and others.

Sewer Line/Drain Line: Two Inch PVC White pipe - *for easier LIBBE installation*)

Odor Control System for Dedicated Vent : CFM @ 0.500 - In SP 23 HP: 1/125 V:115 UL E474179



Temperature Controller (TC): 100-240V. 50/60Hz Normal Operation: 98°F to 102°F

NOTE: If Water temperature goes above 104°F (40°C) - TC shuts off electrical current to
GFCI Outlet - Which shuts off pump and water flow supply!

Ultraviolet Water Purifier / Disinfection System: Lamp: Rated for; 9,000 hours continuous or
intermittent use. Maintenance: Replace Lamp / Bulb every 12 months.

View Tube Light Bulb: 18" Fluorescent Light Fixture, Replacement Bulb - 15 watt / 46cm,
Rated; approximately 10,000 hours, no hum - No flicker

Carbon Filters: Carbon-Impregnated Cellulose Filter Cartridge 5 Micron Rated, Reduces; Chlorine and
sediment. **Special Filter for HOT Water - Replace every 30 Days.** (Temp. Range 40 - 125°F (4.4 - 51.7°C)



WHO CAN LEGALLY USE / OPERATE THE LIBBE?

**THE LIBBE SHOULD ONLY BE OPERATED BY A LIBBE TRAINED COLON HYDROTHERAPIST.
MERE READING OF THE "LIBBE USER OPERATION MANUAL" IN NO WAY QUALIFIES
A PERSON OR PERSONS TO USE A LIBBE COLON HYDROTHERAPY DEVICE !
Device Training MUST be completed at LIBBE recognized Training Instructor or School!**

LIBBE CLASSIFICATION

"LIBBE" Colon Hydrotherapy Equipment, a Class II medical device, has been manufactured
in compliance and has met or exceeded the sanitation and safety standards required by the USA FDA
(Food and Drug Administration). LIBBE meets ISO, CE, EU, Health Canada & Australia Regulations.



LIBBE PRESCRIPTION STATEMENT



USA Federal Law restricts this device to sale by or on the order of a physician or licensed
Health care practitioner. This includes all International Countries operating standards and regulations.

LIBBE POPULATION USE

The LIBBE device is for those clients/patients in need of colon hydrotherapy such as before radiological
or endoscopic examinations; i.e.: Colonoscopy or when medically indicated,

Weight limit for the LIBBE Device is 500 lbs. / 227 kg.



CALL or EMAIL TO REQUEST THE PLUMBING AND INSTALLATION INSTRUCTIONS!



PLUMBING



BASIC LIBBE DEVICE ROOM REQUIREMENTS!

Plumbing specs
Current as of 4/2010

1. SEWER LINE / DRAIN LINE- (Vent as Necessary)

- 2" (5.1cm) PVC pipe (*Five Feet of 2" White PVC PIPE Is shipped with LIBBE*)
- The PVC pipe will be located NO HIGHER than 6-1/2" (17cm) to center of 2" PVC Pipe from the Floor. (Comes out of wall near corner, just high enough for P-Trap to fit)
- Leave a minimum of at least 5" (12.7cm) PVC extended through the wall or extending up from the floor (as from slab or a basement).
- Sewer Line must be located close to corner of room. No more than 8 3/4" (23cm) to center of PVC from corner. - Sewer line vented as Necessary for drainage.

Note: DO NOT Install a P-TRAP Inside Wall or Under Floor. (Prevents double P-trap) (One P-Trap & fittings shipped with Device) and will be connected at time of Installation.

2. INDEPENDENT VENT LINE - This line is separate from the sewer Line!

- 2" PVC pipe - (*PIPE is shipped with LIBBE*) **Important - Do not attach to sewer vent !**

An Odor Control System will be attached. (*Odor Fan is shipped with LIBBE*)

Note: Think of this as Similar to a clothes dryer vent line.

- INDEPENDENT/DEDICATED Vent line should be 45" (1.15m) from the floor and 5" from corner (to center of 2" PVC (5.1cm). Vent installed inside or outside the wall. Leave a minimum of 5" (12.7cm) PVC extending through the wall inside the room.

3. WATER LINES: (One **HOT** and One **COLD** Water Supply Lines)

- 2" (5.1cm) - Female Ball Valves - 1/2" Threaded (12.7mm)
Do not use substitute Ball Valve's
- Any height off the floor 30" average (76.2cm) Off the floor is ideal)
Below LIBBE independent vent line and as close to corner as possible.

LIBBE WATER BACKFLOW SAFETY INFORMATION:

- There is a check valve in LIBBE base immediately behind connector nozzle.
- There is a second check valve in-line before the Ultra Violet system.
- Plus IF any Bacteria were to get past TWO Check Valves, then have to pass thru an Ultra Violet Water Purification System which has a 99.9% safety rating, and even if bacteria were to get thru the UV system, it would then have to pass upwards through the water column and then leap upwards more than 2 inches (5.1cm) into the city water system, go backwards through the pump and jump up into the water tank which has a Anti-siphon "**FluidMaster 400" Fill Float Valve (Code Approved)!** There is also a Watts Anti-Siphon Vacuum Breaker on the view tube Flusher Line. (BFI) really not necessary - only if local plumbing code or regulation that requires it!

4. **ELECTRICAL** All components are **UL** Listed

- One - Electrical outlet on wall (110 volt - 60 Hz.) USA standard (110, 115 & 120 volts will work) Pull is less than two amps of power!
(**International Countries may require converting to 110 - 120 volts 50/60 Hz.)**
 - Ideally, it will be located within two feet (61cm) of the corner near the plumbing
 - Electrical outlet may be located on either wall.
- Note:** Electrical GFI Circuit outlets are part of and installed in the LIBBE cabinet.

Massachusetts Special Plumbing Installation Requirements:

Materials shall comply with Massachusetts Commercial Plumbing Regulations.

Shall install Reduce Pressure Back Flow Prevention Devices for Hot and Cold Water Lines.



CALL or EMAIL TO REQUEST COMPLETE INSTALLATION INSTRUCTIONS!



Room Layouts for LIBBE!

“LIBBE” is pre-plumbed for these ideal configurations.

Ideal room size is 8' x 8' (2.44m x 2.44m)
or larger. However a room size 6'6" (2.1m) wide x 8' (2.5m) long will work.
(Smaller room will be very tight.)

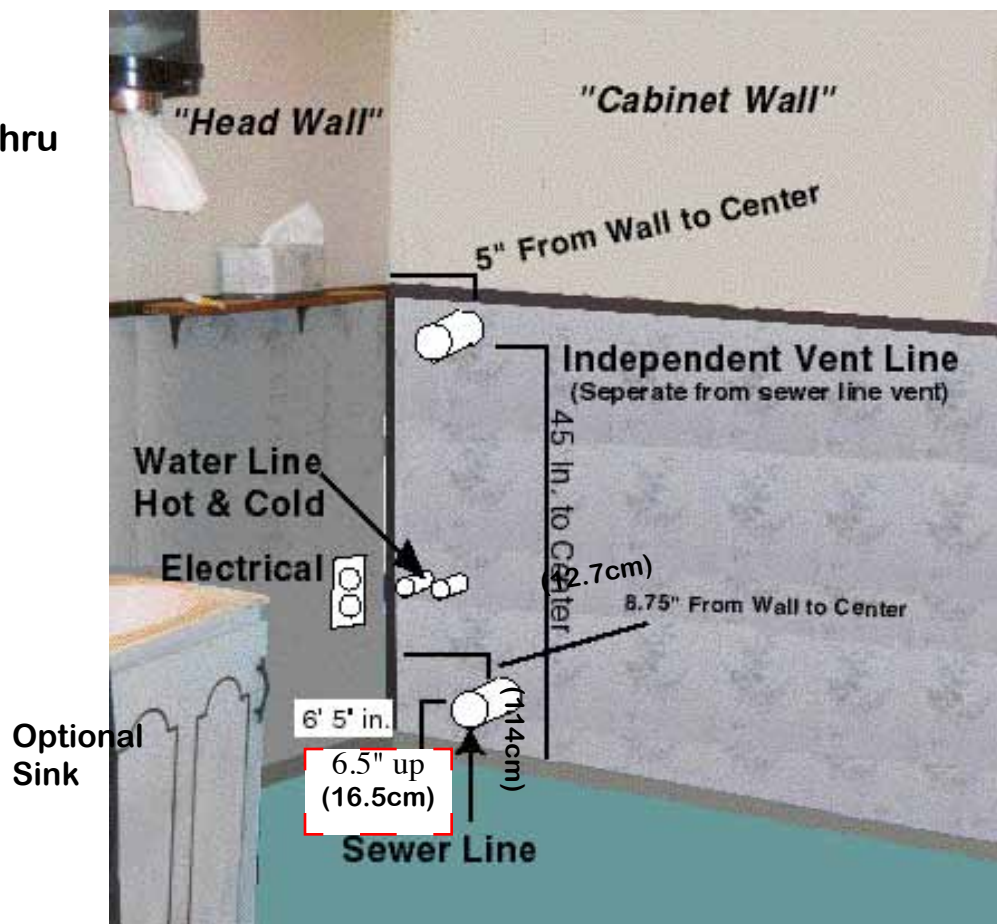
The wall that LIBBE Base (table) is placed parallel to, must have a minimum of 8' (2.44m) with no doors or obstructions.

“LIBBE” MUST be Installed with Plumbing on left side of body near the head.
(Note: Right side Installation will not function!)

Important that the center of sewer pipe is no higher than 6 -1/2" (17cm) above the floor and no more than 8 -3/4" (22.2cm) from the corner of the wall.

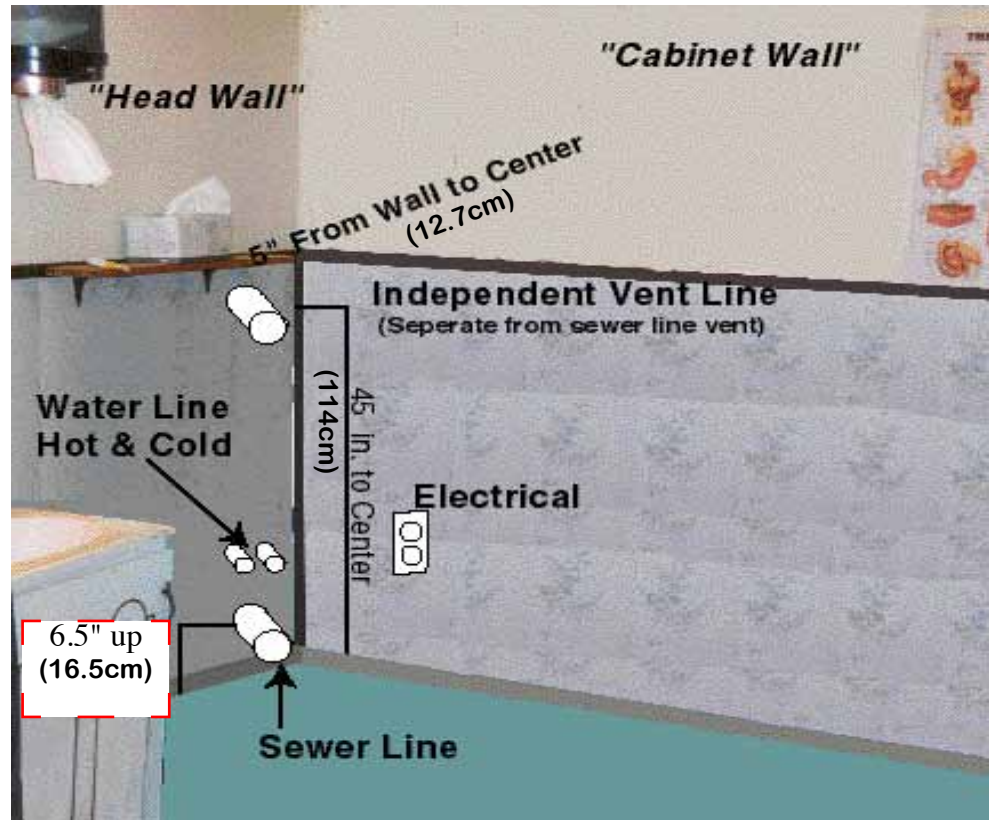
The LIBBE Cabinet hangs on the wall shown here as “Cabinet Wall”
A toilet should be nearby. **(Toilet should not be in same room)**

Option 1
Plumbing coming thru
“Cabinet Wall”



More Options for Layout & Plumbing

Option 2
Plumbing
Coming thru
"Head Wall"



Option 3
Plumbing
Coming
Thru Floor

