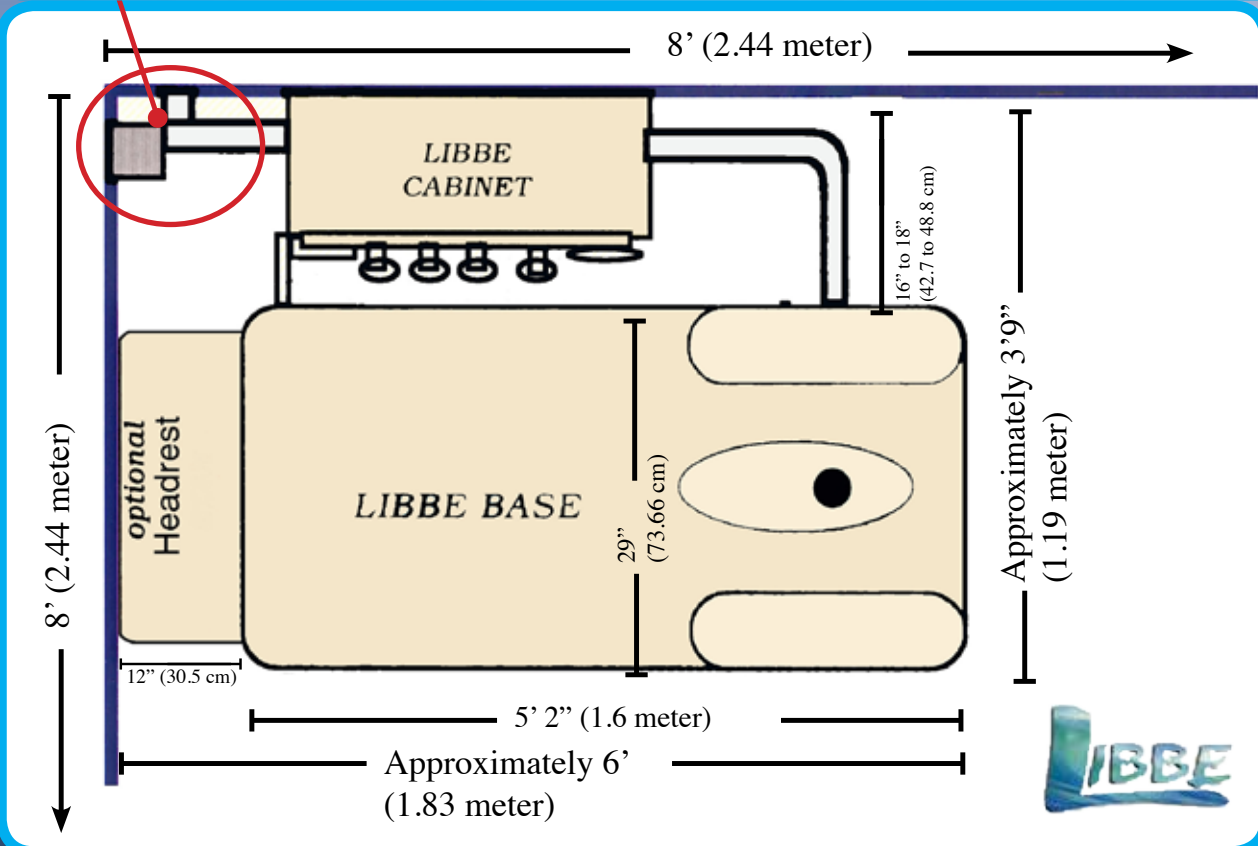


LIBBE Room Plumbing Set Up & Installation



In Corner of Room: Rough Plumbing Connections include: Hot & Cold Water Supply, Waste line, Independent Vent Line, plus a G.F.C.I. Electrical Outlet - All on Left side & Corner of where System is placed.

Installation Instructions



Manufactured By:

Tiller MIND BODY Inc.
 10911 West Avenue
 San Antonio, Texas 78213
 210 308-8888
 Fax 210 349-5679

www.colonic.net

Worldwide since 1995

Systems Built 2015 and After have Serial Numbers start with "E".

Systems Built from 8/2001 to 2014 have older parts & instructions

Systems built 1994 to 2001 have obsolete parts.

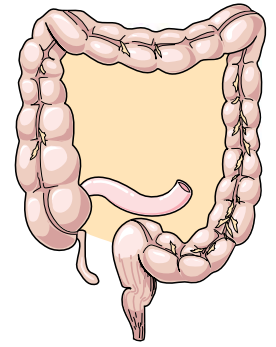
Contact Manufacture with the System Serial Number

***LIBBEs Built 2015 & up**



LIBBE

*FDA Registered
COLON HYDROTHERAPY
SYSTEM*



WHAT IS Colon Hydrotherapy?

Colon hydrotherapy is referred to as Colonics, colon irrigation, or high enemas. All of these are names for colon hydrotherapy which uses water for inner cleansing of the Large Intestine.

A soothing flow of filtered, ultra violet purified warm water is instilled gently into the colon through a disposable colonic nozzle inserted into the rectum to cleanse (evacuate) the contents of the lower colon.

The system is designed to allow evacuation of the contents of the colon during the administration of the colonic irrigation. The pressure, temperature, and flow of water can all be safely regulated throughout the procedure.

Colon hydrotherapy is clean and relaxing.



Medical Device Licensing Agencies



United States (FDA)
Australia (ARTG)
Canada (HC)
European Union (EU)

EMERGO CANADA
#205 15957 84th Ave,
Surrey, BC V4N 0W7 Canada

EMERGO AUSTRALIA
Level 20, Tower II, Darling Park
201 Sussex Street
Sydney, NSW 2000 Australia

Emergo Europe
Molenstraat 15
2513 BH, The Hague
The Netherlands

CE 0459



FDA Intended Use:

Colon Irrigation Systems, are prescription Medical Devices for colon cleansing, such as before radiologic or endoscopic examinations, or when medically indicated.

www.colonic.net



*LIBBEs Built 2015 up



Section One of Two Sections Plumbing the Room Set Up Instructions

For New Locations - Check with Landlord of recommended Plumbers or Maintenance Personnel that can provide the Plumbing and Electrical Requirements for Room Set Up.

When Landlord has no preference then...

Make copies of Part One Instructions and get at least **THREE QUOTES!** Beware of those that do not have a business address or want all money up front. The Licensed Plumber will need two Ball valves and any pipes needed to run the Hot and Cold Water lines and Waste Line.

If you need some advice - draw a picture of room and where plumbing is currently, then Fax or email pictures to us and we will be happy to review with some suggestions. [Graph Page provided Page 13.]

Phone 210 308-8888 Fax 210 349-5679 Email: Tom@colonic.net



EACH LIBBE ROOM WILL NEED -

- Two - Female Ball Valves - 1/2" (12.7mm) Threaded
ONE Hot & ONE Cold Water Line
Do not use substitute Ball valve fittings.

Water Line Hoses, PVC Trap, Five Feet of 2" PVC Pipe, the Clear View Tube, the Odor Control Fan System and other CPVC Fittings are included with LIBBE. (See Page 14. - Packing List)

- **One - G.F.C.I. Wall Outlet**

The Licensed Electrician will need to install:

One Ground Fault Circuit Interrupter, 15 amp.

[To meet United States or International Electrical Codes.]

A Power Cord to meet Electrical Requirements included and a Medical Grade Electrical Isolation Transformer available some areas.

- **One - Mirror from Hardware Store or Walmart called a "Door or Closet Mirror" usually about 50 inches Long and comes with a choice of Colored Frames.**

A Complete Packing List of provided parts found on Page 14.



LIBBE TECHNICAL INFORMATION



WHO CAN LEGALLY USE / OPERATE THE LIBBE?

THE LIBBE SHOULD ONLY BE OPERATED BY A LIBBE TRAINED COLON THERAPIST.
MERE READING OF THE "LIBBE USER OPERATION MANUAL" IN NO WAY QUALIFIES
A PERSON OR PERSONS TO USE A LIBBE COLON HYDROTHERAPY SYTEM!

Training **MUST** be completed at a LIBBE Recognized School!

LIBBE SYSTEM CLASSIFICATION:

"LIBBE" Colon Hydrotherapy System (Medical Device) & Nozzles, (class II.) are Manufactured in compliance and have met or exceeded the Sanitation, Safety, Plumbing & Electrical Standards required by the USA FDA (Food and Drug Administration), ISO, CE, & EU (European Union), TGA (Australia) Tiller MIND BODY, Inc. as Manufacturer of the LIBBE has completed Licensing for United States, Health Canada, Australia and Europe.

LIBBE SYSTEM PRESCRIPTION STATEMENT:

FDA & USA Federal Law restricts a Medical Device to sale by or on the order of a physician or licensed Health care practitioner. This includes all International Countries Medical Device Licensing, operating standards and regulations.

LIBBE SYSTEM POPULATION USE:

FDA (class II) Colonic Irrigation Systems are prescription medical devices and intended for colon cleansing, when medically indicated, such as before radiologic or endoscopic examinations, as identified 21 CFR 876.5220.

LIBBE SYSTEM WEIGHT LIMIT:

Weight limit for the LIBBE System is 500 lbs. / 227 kg.

FOR SERVICE OR TROUBLESHOOTING:

First Review the Quick Reference Guide! If no resolution - The Trained Therapist **MUST** be in front of System and phone Technical support. **99% of issues are easily handled by phone!**

Official Requests for Copies of our Manufacturing Licenses from FDA (USA Food & Drug Administration), and these International Countries, such as; Health Canada, European Union (EU), Australia (TGA), ISO 13485, CE, AND/OR the MET LABS Electrical Testing must be in writing and include a statement acknowledging documents are proprietary.

ALWAYS CONTACT MANUFACTURER FIRST!

Tiller MIND BODY, Inc. 10911 West Avenue, San Antonio, Texas 78213 USA.

E-mail: info@colonic.net Office: 210 308-8888 Fax 210 349-5679



LIBBE ROOM SET-UP WITH THESE IDEAL CONFIGURATIONS



Ideal room size is 8' x 8' (2.44m x 2.44m) or room may be Larger.

[Rooms smaller than 8' x 8' will be very tight and will prevent Wheel Chair access.]
However a room size 6'6" (2.1m) wide x 8' (2.5m) long, for installation in personal residence will work.

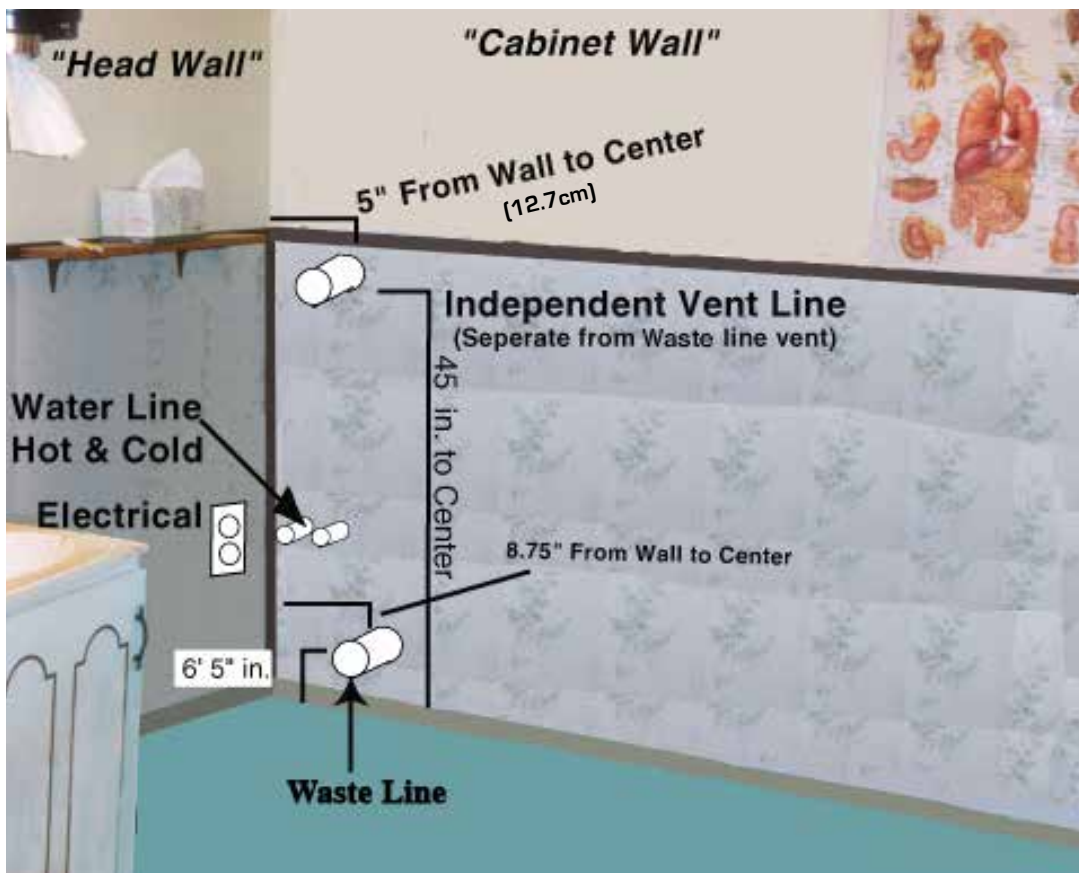
The Wall that LIBBE Base (table) is placed parallel to, (shown here as "Cabinet Wall")
Must be a minimum of 8' (2.44m) wide - This Wall should have no doors or obstructions.

"LIBBE" MUST be Installed with PLUMBING on LEFT SIDE of Device! (Usually in a corner)
(Note: Right side Installation should NOT be considered! - Installing on wrong side will prevent A safe gravity flow and waste line drain properly! You will end up with excessive plumbing costs!)

Important that the center of PVC pipe (Waste Line) is no higher than 6 -1/2" (17cm) above the Floor and no more than 8 -3/4" (22.2cm) from the corner of the wall.
For proper draining of waste material.

Option 1. Diagram shows The LIBBE Cabinet hangs on the wall shown here as **"Cabinet Wall"**

A dedicated toilet and sink should be nearby, but should **NOT** be in the LIBBE room.
This will delay timing for next scheduled session, as client will be detained and you cannot clean Device.



Option 1
Plumbing/Waste Line
Coming through
"Cabinet Wall"

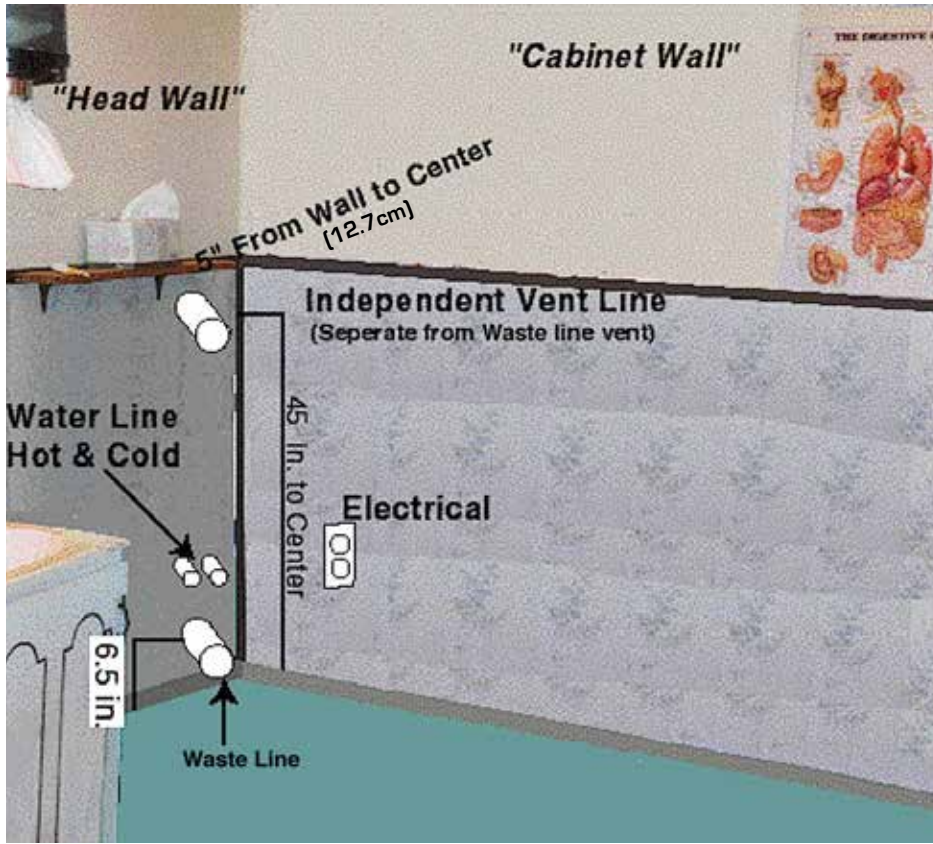


Waste Line coming Through "Cabinet Wall"

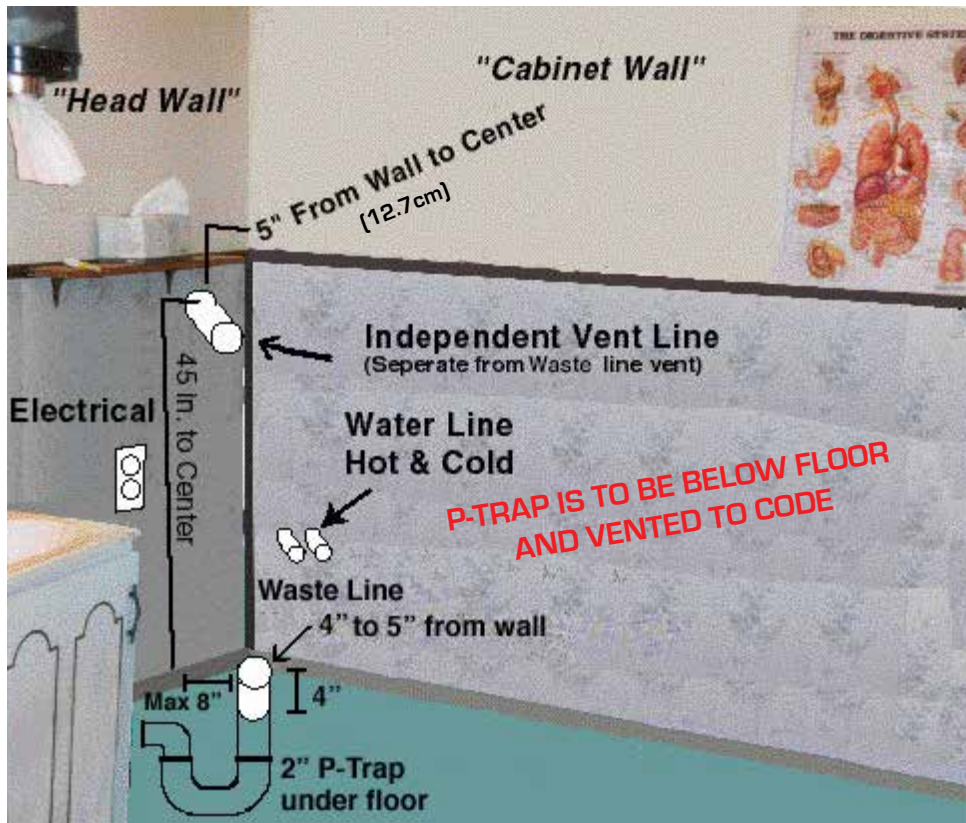


LIBBE ROOM SET-UP

ROOM OPTIONS FOR PLUMBING



Option 2
Plumbing/Waste Line
Coming through
"Head Wall"



Option 3
Plumbing/Waste Line
Coming through
"Floor"



LIBBE PLUMBING ROOM SET UP REQUIREMENTS



1 of 3.) WASTE LINE / DRAIN LINE- (Vent as Codes Require)

- The 2" (5.1cm) PVC pipes **(Five Feet of 2" White PVC PIPE is shipped with LIBBE)**
- PVC pipe (waste Line) located NO HIGHER than 6-1/2" (17cm) to center of 2" PVC Pipe from the Floor. (Out of wall near corner, just high enough for P-Trap to fit)
- Leave a minimum of at least 5" (12.7cm) PVC extended through the wall or extending Up from the floor (as from slab or a basement).
- Waste Line must be located close to corner of room. No more than 8 3/4" (23cm) to Center of PVC from corner. - Waste/Drain line vented as Necessary for drainage.

Note: DO NOT Install a P-TRAP Inside Wall or Under Floor. (Prevents Double P-traps.)
P-Trap, and Fittings shipped with Device, to be connected at time of Installation.



**Waste Line
coming
Through
"Cabinet Wall"**



**Waste Line
coming
Through
"Head Wall"**



**Odor Control Fan
shown here going up
into the ceiling**

2 of 3.) INDEPENDENT VENT PIPE LINE IS DESIGNED TO CONTROL ODOR!

This LINE is separate from the VENT LINE and Runs Independently to the Atmosphere.
Important - Do not attach the Odor Vent Line to the Waste Line, or to any other Vent Lines!
An Odor Control Fan System will be attached.

(2" PVC Pipes and the Odor Control Fan System is included with LIBBE)

Note: Think of this Odor Vent System similar to a Clothes Dryer Vent.

The Odor Vent Pipe should be 45" (1.15m) from the floor and 5" from each corner to the center of the 2" PVC (5.1 cm). The Odor Vent Pipe may be installed inside or outside the wall, leaving a minimum of 5" (12.7cm) PVC extending through the wall inside the room to connect Odor Control Fan as may need to replace in future.

STEP 3. Continued

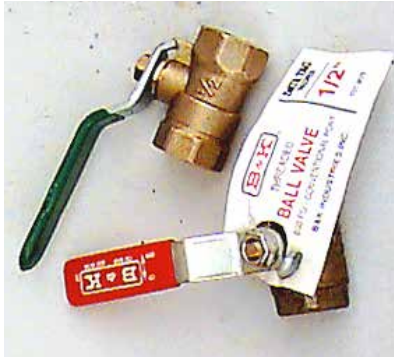


LIBBE PLUMBING ROOM SET UP REQUIREMENTS Continued...



3 of 3.] One HOT and One COLD Water Supply Lines:

- Two (5.1cm) - Female Ball Valves - 1/2" Threaded (12.7mm) - no higher off the floor than 30" (76.2cm) Below LIBBE independent vent line and close to corner either corner.



**Note: Parts for LIBBE Room will be -
Two - Female Ball Valves - 1/2" (12.7mm) Threaded
ONE Hot & ONE Cold Water Line
Do not use substitute Ball Valves.**

(Ball Valves are not included with LIBBE purchase)

ATTENTION PLUMBERS LIBBE BACK FLOW WATER SAFETY EXCEEDS PLUMBING CODES!

- There is a check valve on the LIBBE Base immediately behind the connector nozzle.
- There is a second check valve in-line before the Ultra Violet system in the Cabinet,
- Plus IF any possible Bacteria were to get past TWO Check Valves, it would have to pass thru an Ultra Violet Water Purification System which has a 99.9% safety rating, and even if bacteria were to get thru the UV system, bacteria would then have to pass upwards through the water column and then Leap upwards more than 1-1/2 inches (5.1cm) (Open Air Gap) into the city water system, go backwards through the pump that only pumps water forward and then jump up into the water holding tank, of which has a 1 inch Open Air Gap and a Anti-siphon "Fluid Master 400" installed!

(ASSE 1002 Code Approved)

- There is also a Watts Anti-Siphon Vacuum Breaker (ASSE 1001) on the View Tube Flusher Line.
- System is designed with several Air Gaps (from 1" to 4" Air Gaps) throughout the System to prevent Back Flow!

Additional Back Flow Prevention Valves are NOT Necessary!

CAUTION!

LIBBE Medical Systems are Manufactured & Tested to meet the required USA and International safety regulations.

Any deviations (changes) from Manufacturer Installation Instructions will become the Responsibility & Liability of the Installer & Owner and Warranty will be Voided



LIBBE AIR GAPS To Meet Plumbing Codes



Manufacturer has designed LIBBE System with these Air Gaps to prevent Back Flow
(See Design Drawing on Page 12. #37.)



**FLUIDMASTER 400 FILL FLOAT VALVE
INSIDE WATER TANK**
(Anti Siphon Stands 1+” above the Overflow Inside Tank)



Connector Nozzle Draining into Base
where Waste/Water drains
into Waste Line (Over 4” Air Gap)



1-1/2” AIR GAP

**TANK OVERFLOWS INTO DRAIN LINE
MUST HAVE A minimum of 1-1/2” AIR GAP**



PLUMBING PARTS MEET ANSI/ ASME, USA-ASSE, ASTM



FLUID MASTER Fill Float Valve Inside Tank - EXCEEDS BACK FLOW CODES!
Fluidmaster Anti Siphon Valve (400 series) USA-ASSE 1002, Canada-CSA, Meets Mexico, Australia, British, Sweden, Singapore, Hong Kong and others!

Anti-Siphon Valves - Watts Vacuum Breaker:
ASSE 1001, ANSI A112.1.1 Watts LF288A, Canada - CSA B64

Check Valves - CPVC/EPDM 1/2 inch: (Silicone Free)
Type 360, ASTM D-2467, ANSI B1.20.1

GROHE Volume Control Valves - 29-273 Series, ANSI/ASME A112.18.1M,

MOEN - Mixing Valve - Posi-Temp Valve (Pressure Balancing Valve)
ASME A112.10.1M, Canada - CSA B-125

Female Ball Valves - 1/2 inch: (12.7mm) Threaded

PVC - Pipe: plus Fittings, Unions, Couplings etc.
ASTM D1785, ASTM D-2466, ANSI B1.20

CPVC - Pipe plus Fittings, Unions, adapters etc.: ASTM D-1598

Clear View Tube - PVC Pipe with a 90° curve is clear with no coloring

Water Pressure Tests:

Tests conducted for US-FDA and International Agencies by a; TEKMETER, Fluke PV350 pressure Transducer module. Water pressure with Flow Control Valve full open: 1.5psi - Maximum flow rate was 2,661.66 milliliters per minute.

A Few of the Testing Symbols are:



Plumbing Inspectors: Should further code clarification be needed,

Please contact our Consultant:

Robert Stricker @ RVS Code Consulting, LLC. email: rvs1123@gmail.com

Licenses & Certification: M 13186; I 1412; BPAT 0007361; IAPMO Certified 09553
40 yrs construction; 34 yrs Licensed Master Plumber with medical gas & multipurpose Fire Sprinkler Endorsements; 26 years in municipal code inspections; 19 yrs Chief Plumbing Inspector and 4-1/2 yrs as Director of Planning & Development Services.



ELECTRICAL Room Set up Requirements



Electrical Parts: UL Listed and LIBBE System passed Electrical Testing at MET Labs!

Requires One - G.F.C.I. 15 amp Electrical outlet from your Country installed on Wall!
(110 volt - 60 Hz.) USA standard (110, 115 & 120 volts will work) Pull is less than 2 amps of power! The G.F.C.I. Outlet will be located on either wall within easy access so you can reach in event of re-setting, and within 5' (1.5m) of the corner near the LIBBE plumbing.

Note: If your going to have an optional Hot Water Heater Booster, a CD Player, or Other Electric Item in Room you will need a separate Electrical Outlet. Never plug anything else into the LIBBE System or Isolation Transformer!

(A Power cord for your Country is shipped with LIBBE System. - When available.)

LIBBE power cord may be plugged into the optional Isolation Transformer and the Isolation Transformer is then plugged into the 15 amp. G.F.C.I. Outlet on the wall.

(Optional ISO Box may be shipped with LIBBE)

⚠ CAUTION: Grounding reliability can only be achieved when this equipment is connected to a matching receptacle and should be checked periodically.

DANGER: To reduce the risk of electrical Shock, **NEVER** open the Electric Control Box or the Isolation Transformer enclosure.

There are No Serviceable parts inside. Warranty will be Voided if Opened!

Risk for explosion exists if used in the presence of flammable gases or liquids.



Electrical Components used are UL Listed

- **G.F.C.I.:** Ground Fault Circuit Interrupter, 15 amp. For United States or International Electrical Codes.
(G.F.C.I. Not included with Device)
- **LIBBE Electric Control Box on 2015 & Up** (Two 3 amp Fuses) 110 volt - 60Hz. USA., Canada Standard. All Electrical components are **UL** listed & pull less than two amps)110, 115 & 120 volts,50/60Hz.
- **Medical Grade Isolation Transformer: (ISO Box)**
Toroid Input/Output: Selectable,100/120/220/240V, 50 - 60Hz, UL2601.1, CSA C22.2 No. 601.1, EN60601-1, EN60742, IEC601-1 (IFU in Operations Manual)
- **CONTROL Temperature Controller (TC):** Partlow 1160+ 100-240V. 50/60Hz, Normal Operation: 98°F to 102°F
The TC Temperature Perimeters must be determined and calibrated by LIBBE Device Manufacture!
NOTE: Should water temperature go above 104°F (40°C) +2°, the TC shuts off electrical current to pump.
- **PUMP:** For Circulating Water Inside Tank: U.L. Recognized under the U.L. Component program
March Pump 1A-MD-1/2 Mag Drive Pump C.S.A. Approved under File NO. 40072.
- **Odor Control Fan System:** HP; 1/125 V:115CFM @ 0.500 - In SP 23 UL Listed E474179
- **Ultraviolet Water Purification:** Made in Canada, EPA# 57987-CN-00, CE, **Bulb** Rated; 9,000 hours use.
To Keep water Purified - Replace Bulb every 12 months. (IFU Instructions in LIBBE Operations Manual)
- **View Tube 16" Light Bar:** Model #UC1011-WHG-16FO-U approx. 36,000 hours. 0.095-watt (152.4cm),